



Department of Education and
Early Childhood Development



Bendigo Senior Secondary College (7595)

2009 School Level Report

Please check the data in this report. If, after comparing it with your own records, you deem it to be incorrect or incomplete, follow the directions on the following website:

- <http://www.education.vic.gov.au/management/schoolimprovement/performancecddata>
then select 'School Performance Reports'.
-
-

Contents

	Page No.
Privacy	3
SFO Density and LBOTE	4
Teacher Judgments against the VELs	5-13
NAPLAN - Reading	14
- Writing	15
- Numeracy	16
AIM - Reading	17
- Mathematics	18
VCE	19-24
VET	25
VCAL	26
Teacher Assessment of Student Progress (PSD students)	27-28
Enrolment	29
Student Retention - Apparent	30
- Real	31
Exit Destination	32-35
Student Absence	36
Opinion Surveys - Parent	37
- Staff	38
Performance & Development Culture	39
Staff Sick Leave	40
Bank Balances	41

Privacy

When reporting on the school's performance to the school community, care must be taken to avoid the disclosure of information that can directly or indirectly identify an individual. This may be a particular issue when reporting on the achievement of specific cohorts of students or the opinions of staff where there are small numbers.

In situations where privacy cannot be assured, schools may wish to report on the mean result or provide a written comment on school, year level or cohort performance.

Where the School Level Report is provided to school council members as part of any annual reporting process, or used for discussion on a school's performance, such as in consultation with the school community in the school self-evaluation process, it is important to remind school community members of their duty to only use this information for the purpose it was provided, and that the material must be kept confidential.

It is important to note that information that identifies an individual or can be used with other readily available information to identify a person is now protected by the *Information Privacy Act 2000* (<http://www.education.vic.gov.au/about/deptpolicies/informationprivacy.htm>).

SFO Density and LBOTE

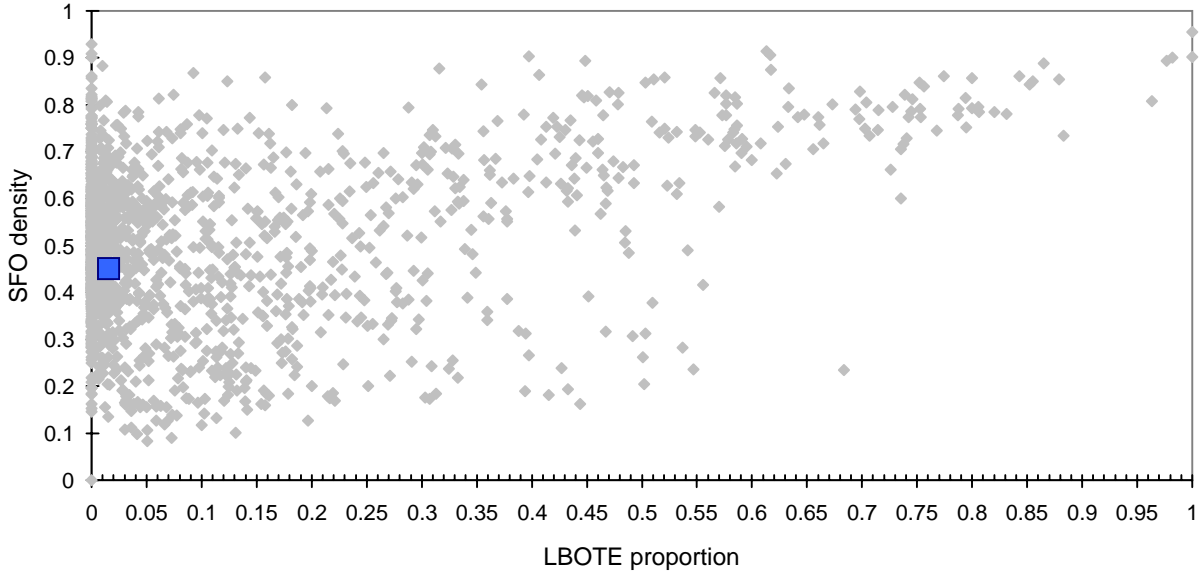
School no: 7595

School name: Bendigo Senior Secondary College

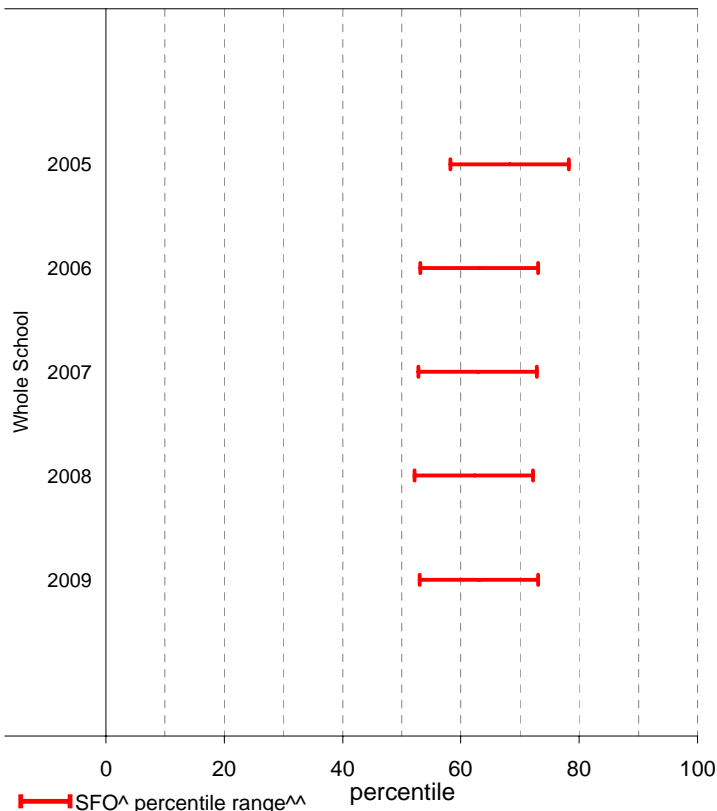
Explanation: The chart below plots the school's 2009 SFO (Student Family Occupation) density[^] and LBOTE (Language Background Other Than English) proportion* against that of all other government schools. This school is highlighted as a square on the chart.

	2002	2003	2004	2005	2006	2007	2008	2009
SFO density [^] :			0.43	0.41	0.42	0.43	0.44	0.45
LBOTE proportion*:	0.01	0.01	0.01	0.01	0.01	0.01	0.00	0.02

School's 2009 SFO density and LBOTE proportion against that of all other government schools



School's SFO[^] percentile range^{^^} over time



Notes: [^] The higher the SFO density, the lower the SFO percentile and the lower the socio-economic status (SES).

^{^^} The school's SFO percentile range shows this school's SFO percentile +/- 10%.

* From 2007, a student is LBOTE if either the student or one parent/guardian speaks a language other than English at home. Prior to 2007, a student is LBOTE if the student or one of the parents was born in a non-English speaking country.

VCE

School no: 7595

School name: Bendigo Senior Secondary College

Explanation: Only 2009 studies, which at least 1 student completed, are included.

Source of data: Victorian Curriculum and Assessment Authority.

Notes:	2005		2006		2007		2008		2009	
- After allstudy, English, Further Maths and Maths Methods, studies are listed in descending order of the number of students in the latest year.	No. of students	school mean	No. of students	school mean	No. of students	school mean	No. of students	school mean	No. of students	school mean
- From 2005, VET study scores are included.										
- From 2005, data is based on 'reported' study scores, not 'achieved' study scores.										
allstudy		29.7		28.9		28.8		28.8		29.2
English EN01	541	27.4	607	26.3	522	26.4	517	26.1	470	26.1
Further Mathematics MA07	349	30.7	338	28.3	299	28.8	353	29.9	370	29.7
Health & Human Dev. HH03	194	32.7	203	31.2	232	31.7	222	31.7	248	32.0
Business Management BM03	194	30.5	211	30.9	182	30.7	212	30.6	196	31.6
Psychology PY03	157	32.3	209	30.9	178	30.2	184	29.4	186	30.9
Physical Ed. PE03	97	29.8	132	28.6	113	27.1	155	27.8	145	28.6
Biology BI03	139	29.0	120	28.3	129	28.2	124	28.6	126	28.4
English Language EL01	113	28.9	67	31.0	78	30.5	80	30.3	109	30.3
Legal Studies LS03	85	31.6	76	28.4	86	30.4	67	30.5	86	30.3
Mathematical Methods (CAS) MA11	22	29.2	44	31.8	38	29.6	107	29.6	84	29.0
Chemistry CH03	87	29.9	64	30.8	77	28.7	60	29.2	72	27.9
Visual Communication & Design VC03	60	31.0	65	30.7	50	30.2	61	29.3	66	28.4
Design & Tech. DT03	56	32.8	71	30.0	76	29.5	68	30.3	65	31.2
Literature LI01	69	29.1	36	28.7	46	26.2	59	25.7	59	26.9
Studio Arts SA03	93	32.1	81	30.6	84	31.7	71	30.6	58	31.8
Media ME03	97	29.5	72	28.5	83	27.8	72	27.6	52	28.1
Physics PH03	66	29.8	71	30.0	51	30.9	57	30.9	52	31.1
Art AR03	49	30.0	52	28.2	45	27.2	45	29.9	51	28.8
Accounting AC03	37	32.8	39	31.1	31	29.5	43	32.0	47	30.2
Australian History HI08	19	25.6	20	26.7	31	28.7	18	26.3	43	29.6
Environmental Science EV03	43	26.5	36	27.4	34	25.6	23	24.4	41	26.7
History (Revolutions) HI13	20	29.3	22	24.7	33	26.1	30	28.8	41	27.4
International Studies IS03	45	27.2	42	27.0	43	26.2	59	25.3	40	26.4
IT Applications IT02	80	30.0	60	28.1	44	28.9	36	27.5	40	31.6
Industry & Enterprise Studies IE03	39	32.1	36	30.0	29	31.1	40	27.7	36	29.2
Software Development IT03	28	29.5	27	31.8	38	26.7	35	29.2	33	28.3
Philosophy PL03	33	30.3	29	30.2	21	34.2	21	29.5	29	29.5
Multimedia (VCE VET) MU02	15	30.1	24	30.3	24	27.7	29	27.2	28	27.5
Specialist Mathematics MA09	55	26.0	58	29.2	46	27.1	47	26.4	26	30.3
Classical Societies & Cultures CS03	23	25.9	32	26.5	14	24.2	28	25.2	25	22.6
German LO10	38	30.3	27	33.2	30	28.0	18	30.9	19	30.1
Drama DR03	41	26.4	33	27.9	27	24.9	19	27.2	17	24.4
Geography GE03									17	22.2
Food & Tech. FY03	29	30.1	26	29.0	18	32.6	20	30.1	16	30.5
Music Performance: Solo MC02	12	30.9	15	33.4	13	31.4	17	32.1	15	32.7
Theatre Studies TS03	22	28.5	28	25.5	13	27.9	17	23.1	15	27.1
Economics EC03	14	26.9	12	27.3	12	27.0	12	33.5	14	27.8
History (Renaissance Italy) HI16	17	24.1	15	24.2	15	23.3	16	24.4	14	25.4

VCE

School no: 7595

School name: Bendigo Senior Secondary College

Explanation: Only 2009 studies, which at least 1 student completed, are included.

Source of data: Victorian Curriculum and Assessment Authority.

Notes:	2005		2006		2007		2008		2009	
	No. of students	school mean	No. of students	school mean	No. of students	school mean	No. of students	school mean	No. of students	school mean
- After allstudy, English, Further Maths and Maths Methods, studies are listed in descending order of the number of students in the latest year.										
- From 2005, VET study scores are included.										
- From 2005, data is based on 'reported' study scores, not 'achieved' study scores.										
Outdoor & Environmental Studies OS03	36	31.1	22	31.0	16	30.3	18	31.1	14	31.8
Sport & Rec (Community) (VCE VET) SR21					13	28.6	9	30.6	13	32.4
Auslan LO03	30	27.4	18	28.7	19	28.8	16	27.3	12	25.5
French LO09	21	24.1	17	25.2	15	25.9	10	22.5	12	19.7
Hospitality (Food & Bev.) (VCE VET) HS06	16	29.4	16	27.4	10	30.0	13	28.0	12	29.4
Systems Engineering SE03					11	30.0	15	32.4	12	26.7
Community Services Work (VCE VET) CT11			8	27.5	12	31.8	4	32.3	11	33.0
Music Industry (Tech Prod) (VCE VET) MI09	7	36.9	7	40.1	15	31.3	9	33.2	11	34.4
Music Styles MS03	18	29.2	10	28.9	11	25.5	16	29.8	10	31.3
English ESL EN09	11	27.0	9	28.7	7	26.9	5	29.4	9	31.6
Indonesian 2nd Language LO40	15	32.5	24	30.3	12	32.2	17	32.5	9	31.8
Business Admin (VCE VET) BU05	3	36.0	7	25.6	3	41.3	6	36.5	8	31.0
Chinese 1st Language LO04			8	29.4	6	24.2			8	29.3
Sport & Rec (Outdoor) (VCE VET) SR19					10	30.7	5	30.6	8	32.3
Agricultural & Horticultural Studies AH03	21	31.9	29	29.4	12	30.8	18	30.7	7	35.0
Chinese 2nd Language LO39			2	28.0	2	32.0			6	21.3
Dance (VCE VET) DN04									5	27.0
Engineering Studies (Cert. II) (VCE VET) EG07			5	30.4	6	35.7			5	35.4
Information Technology (VCE VET) IN21					4	41.0	1	32.0	5	33.6
Electrotechnology (VCE VET) ET06					7	32.0	5	37.0	3	35.3
Furnishing (VCE VET) FN08			6	29.3	4	36.0	1	26.0	3	28.3
Equine Industry (VCE VET) EQ02	6	20.7	11	23.9	5	23.8	9	23.0	1	39.0
Spanish LO27							1	43.0	1	29.0

VCE

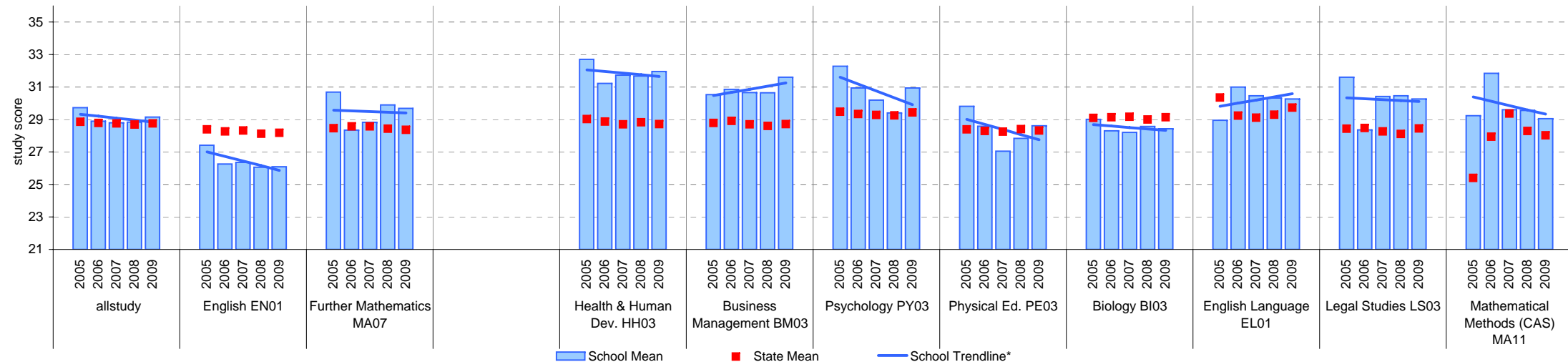
School no: 7595

School name: Bendigo Senior Secondary College

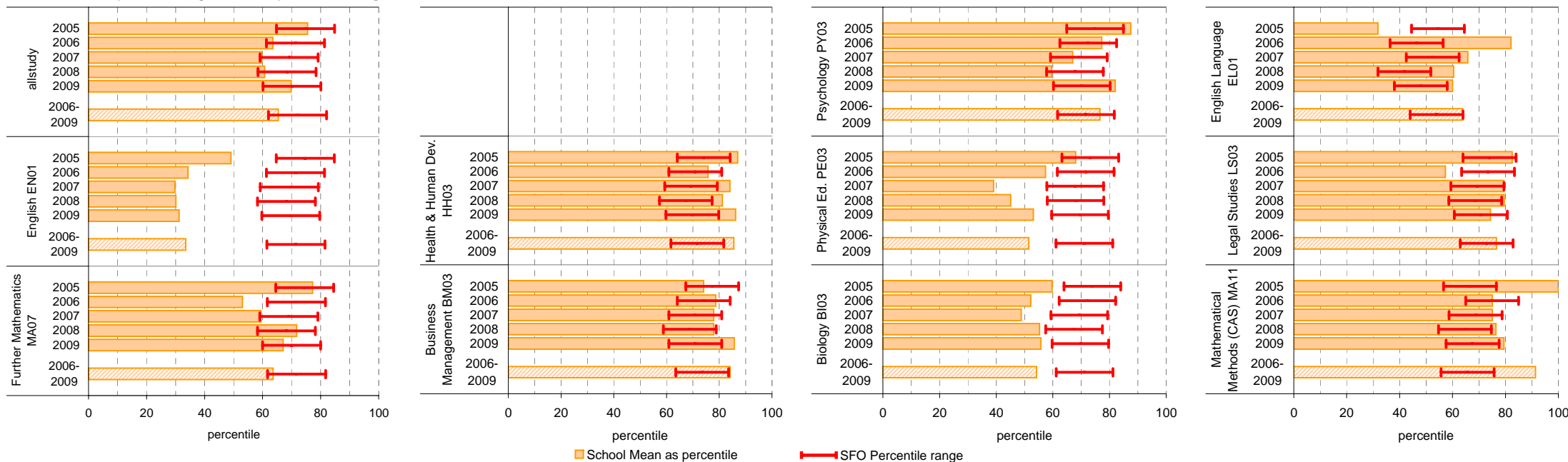
Source of data: Victorian Curriculum and Assessment Authority.

School Mean against State Mean

- Notes:
- * The school trendline is only plotted when there is data for each calendar year.
 - After allstudy, EN01, MA07 and MA08, the remaining studies are charted in order of the number of students who completed that study in 2008, from highest to lowest.
 - From 2005, VET study scores are included.
 - From 2005, data is based on 'reported' study scores, not the 'achieved' study scores.
 - Only the results of the 32 studies with the most students (apart from EN01, MA07 and MA08) are charted.



School Mean as percentile against SFO percentile range



VCE (cont'd)

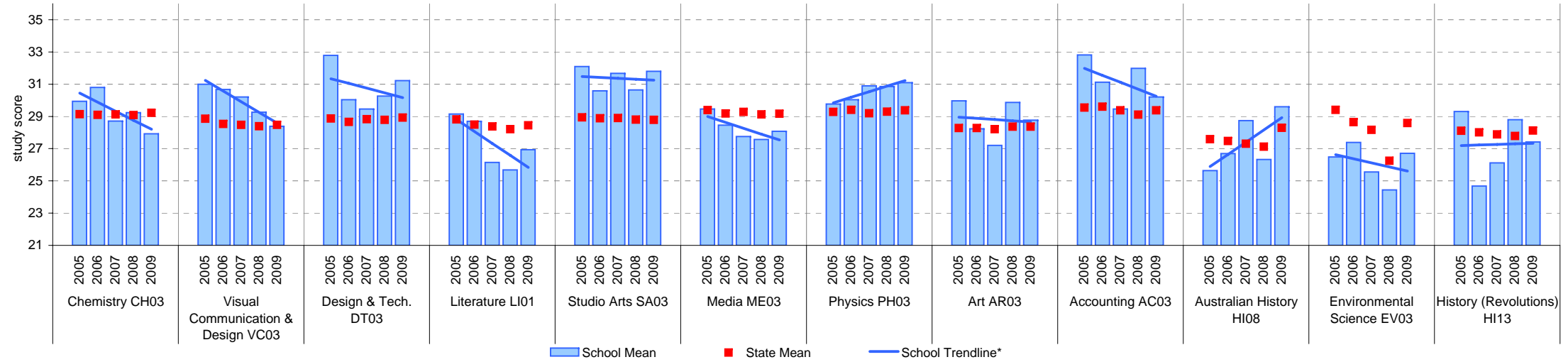
School no: 7595

School name: Bendigo Senior Secondary College

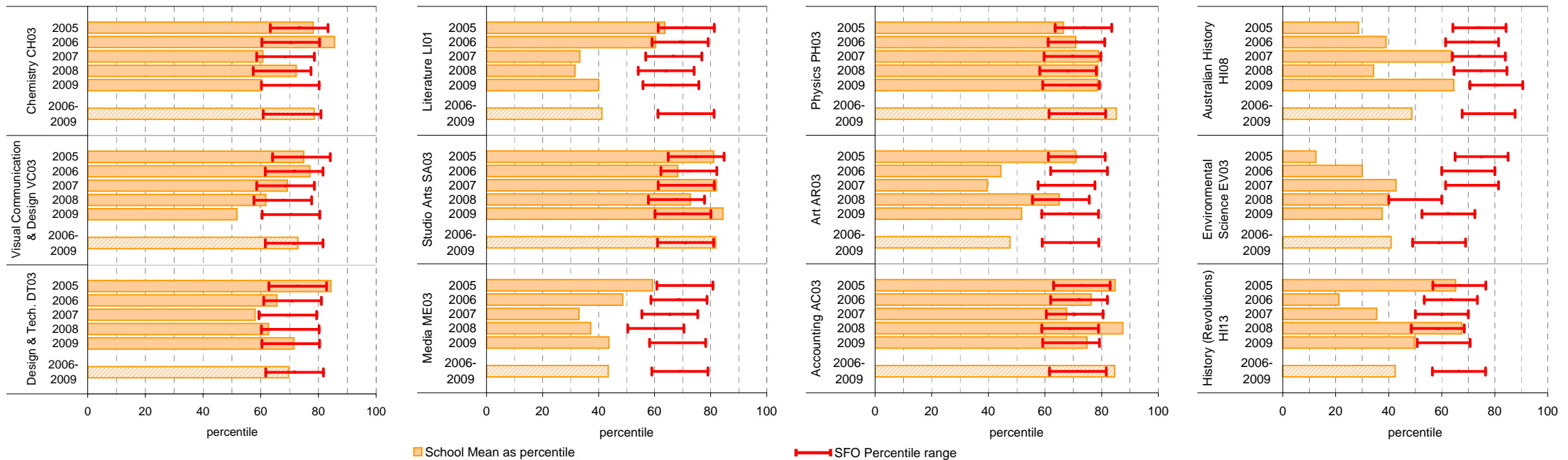
Source of data: Victorian Curriculum and Assessment Authority.

School Mean against State Mean

- Notes:
- * The school trendline is only plotted when there is data for each calendar year.
 - After allstudy, EN01, MA07 and MA08, the remaining studies are charted in order of the number of students who completed that study in 2008, from highest to lowest.
 - From 2005, VET study scores are included.
 - From 2005, data is based on 'reported' study scores, not the 'achieved' study scores.
 - Only the results of the 32 studies with the most students (apart from EN01, MA07 and MA08) are charted.



School Mean as percentile against SFO percentile range



VCE (cont'd)

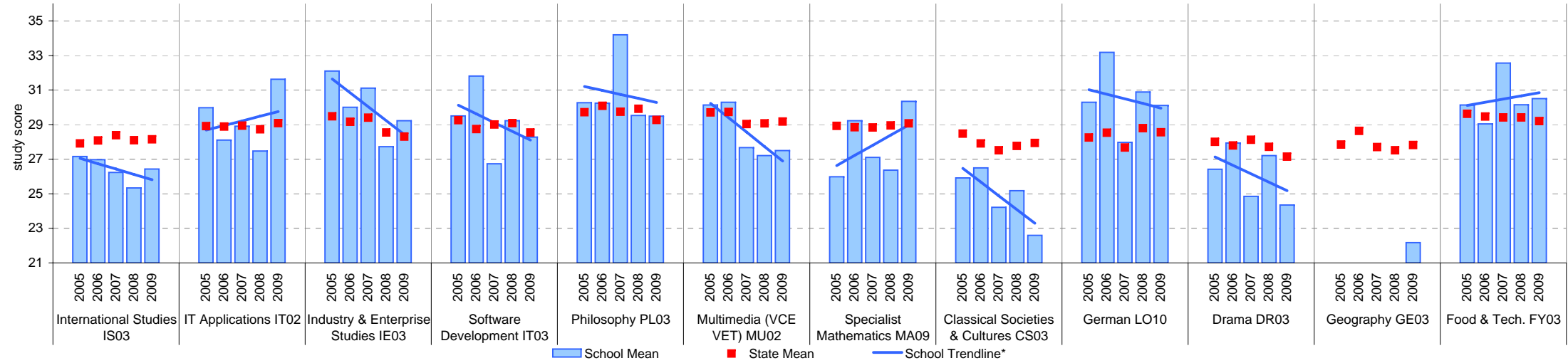
School no: 7595

School name: Bendigo Senior Secondary College

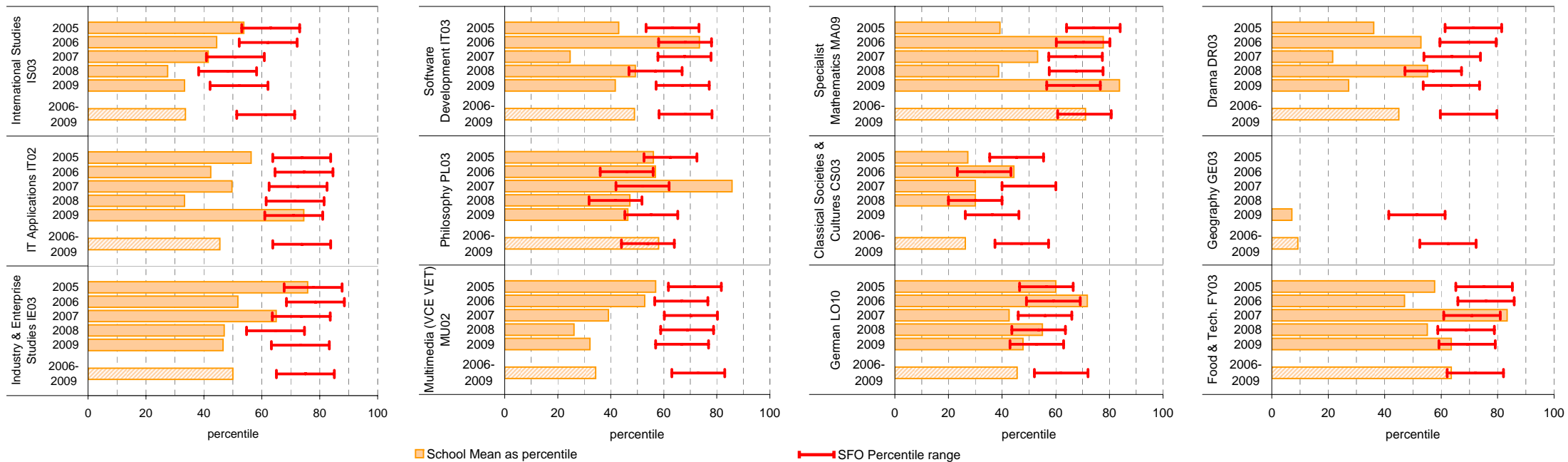
Source of data: Victorian Curriculum and Assessment Authority.

School Mean against State Mean

- Notes:
- * The school trendline is only plotted when there is data for each calendar year.
 - After allstudy, EN01, MA07 and MA08, the remaining studies are charted in order of the number of students who completed that study in 2008, from highest to lowest.
 - From 2005, VET study scores are included.
 - From 2005, data is based on 'reported' study scores, not the 'achieved' study scores.
 - Only the results of the 32 studies with the most students (apart from EN01, MA07 and MA08) are charted.



School Mean as percentile against SFO percentile range

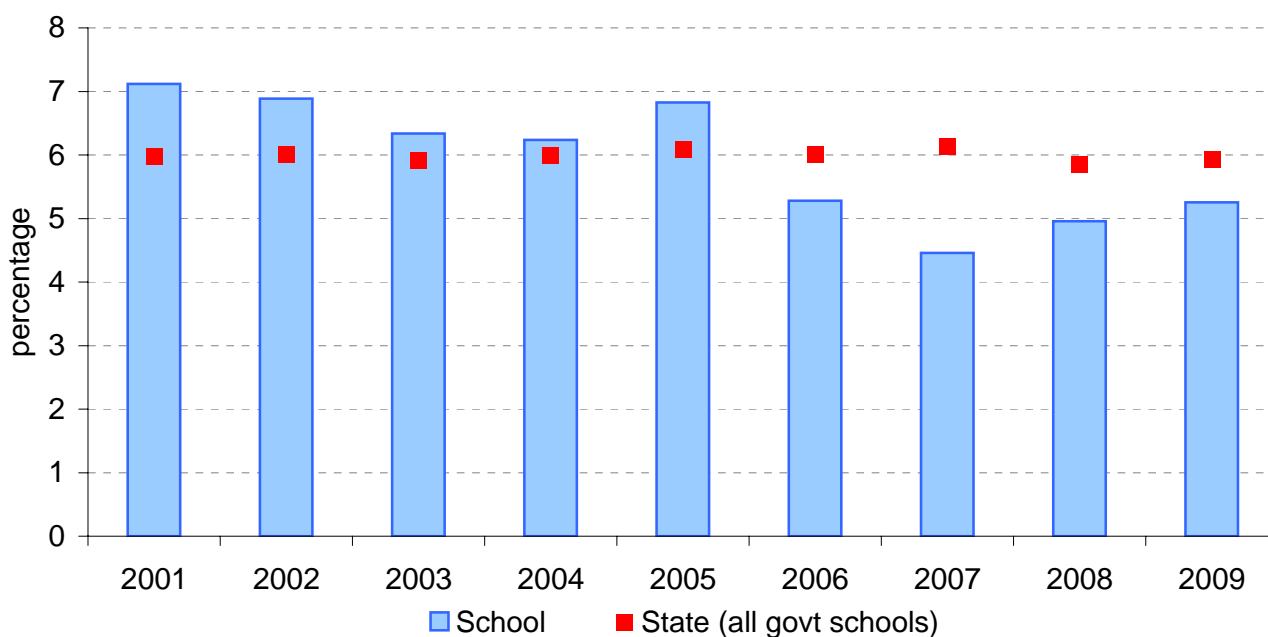


VCE: Study Scores of 40 or more

School no:	7595
School name:	Bendigo Senior Secondary College
Explanation:	Of all VCE study scores, the percentage that were 40 or more.
Source of data:	Victorian Curriculum and Assessment Authority.

Year	School		State (all govt schools)
	Total study scores	% 40 or more*	% 40 or more
2001	3764	7.1	6.0
2002	4051	6.9	6.0
2003	4056	6.3	5.9
2004	3609	6.2	6.0
2005	3457	6.8	6.1
2006	3467	5.3	6.0
2007	3209	4.5	6.1
2008	3228	5.0	5.9
2009	3236	5.3	5.9

VCE percentage of study scores of 40 or more*, 2001 to 2009



Note:

- * Prior to 2005, this data may not match the information published in *The Age*. Data presented on this page prior to 2005 does not include study scores from the small number of VET studies that are given study scores.
- From 2005, VET study scores are included.
- From 2005, data is based on 'reported' study scores, not 'achieved' study scores.

VET

School no: 7595
School name: Bendigo Senior Secondary College
Source of data: Victorian Curriculum and Assessment Authority.
 More detailed information is available on the VASS system provided by VCAA.

Notes: * - The school trendline is only plotted when there is data for each calendar year.

1 - UOC = Unit(s) of Competence.

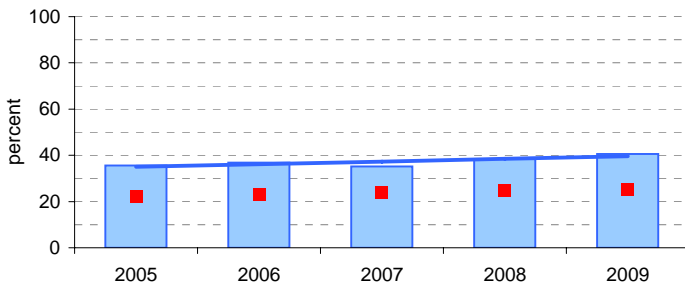
2 - % students based on yr10, 11 & 12 August enrolments.

3 - Only includes students undertaking at least 1 UOC.

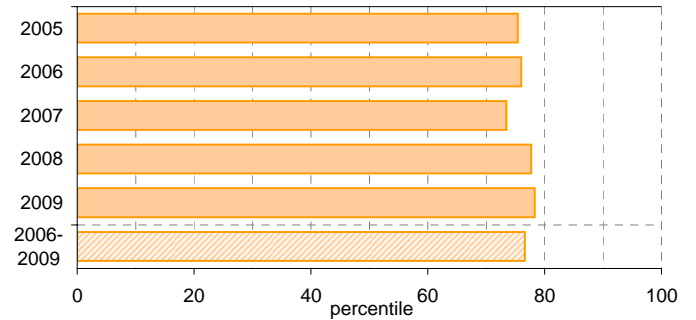
Participation						Completion			
School					State		School		State
Year	Year Level	No. students undertaking at least 1 UOC ¹	% students ² undertaking at least 1 UOC ¹	Avg no. UOCs ¹ undertaken per student ³	% students ² undertaking at least 1 UOC ¹	Avg no. UOCs ¹ undertaken per student ³	No. UOCs ¹ with satisfactory result	% UOCs ¹ with satisfactory result	% UOCs ¹ with satisfactory result
2005	10	1	-	10			7	70	
	11	373	41.5	11.4			2799	65.9	
	12	213	28.4	11.2			1633	68.6	
	10-12	587	35.6	11.3	22.3	11.9	4439	66.9	72.6
2006	10	-	-	-			-	-	
	11	354	40.6	13			2896	63.1	
	12	254	32.7	11.9			2074	68.4	
	10-12	608	36.9	12.5	23.0	12.0	4970	65.2	75.6
2007	10	-	-	-			-	-	
	11	336	37.2	11.4			2956	77.4	
	12	233	32.7	10.9			2249	88.9	
	10-12	569	35.2	11.2	23.8	11.7	5205	82	76.4
2008	10	-	-	-			-	-	
	11	372	42.4	11.3			3589	85.4	
	12	257	33.6	11.6			2515	84.4	
	10-12	629	38.3	11.4	24.6	12.0	6104	84.9	76.7
2009	10	1	-	5			4	80	
	11	401	45	10.1			3350	82.5	
	12	265	35.2	10.3			2371	86.8	
	10-12	667	40.6	10.2	25.1	11.8	5725	84.2	78.9

Participation - % Yr10-12 students² undertaking at least 1 UOC¹

School against State

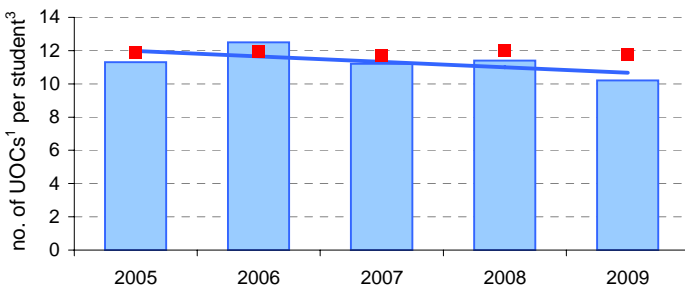


School as percentile

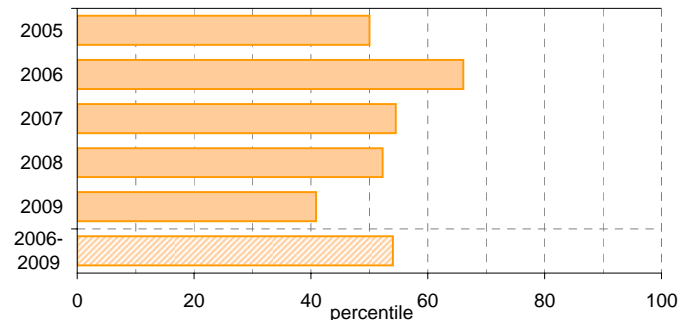


Avg no. UOCs¹ undertaken per student³

School Mean against State Mean

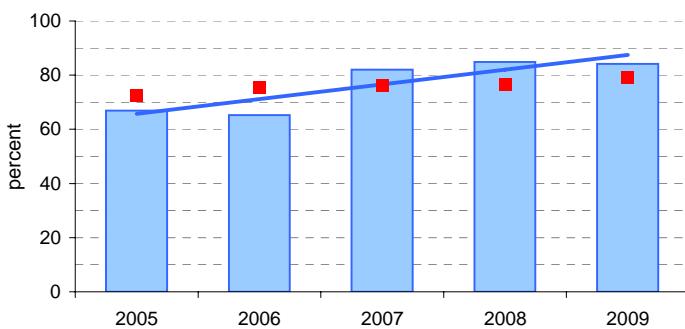


School Mean as percentile

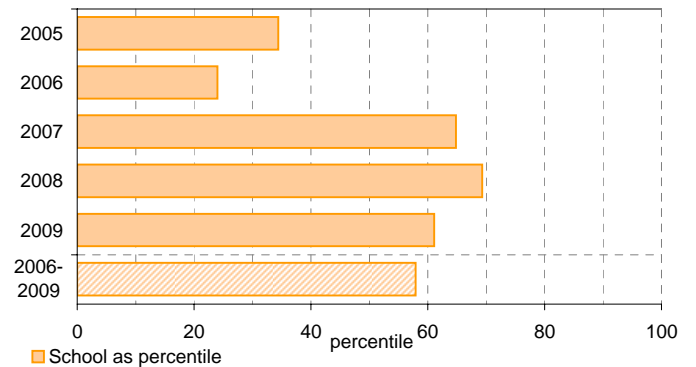


Completion - % UOCs¹ with satisfactory result

School against State



School as percentile



Legend: School (blue bar), State Mean (red square), School Trendline* (blue line), School as percentile (orange bar)

VCAL

School no: 7595
School name: Bendigo Senior Secondary College
Explanation: 'No. of VCAL credits undertaken' is calculated by summing the number of credits undertaken by each VCAL student across all VCAL students.

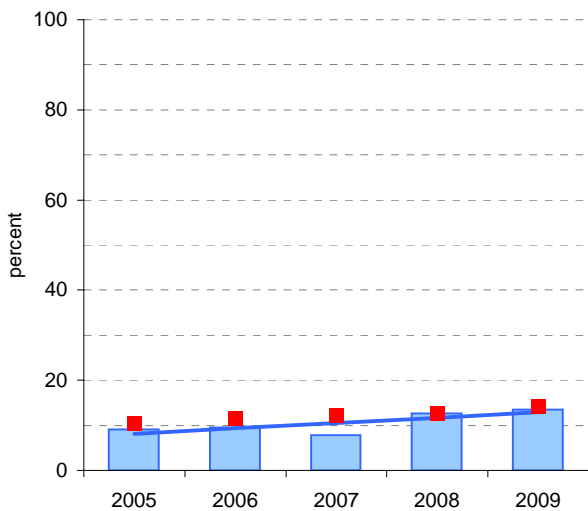
Notes:* - The school trendline is only plotted when there is data for each calendar year.

1 - No. and % students based on yr11 & 12 August enrolments.

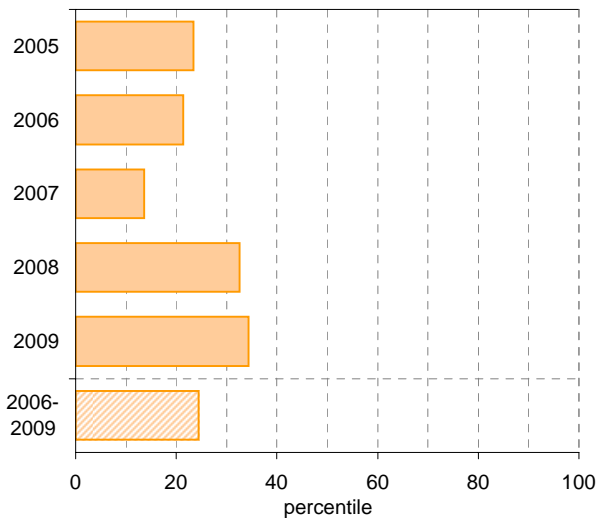
Source of data: Victorian Curriculum and Assessment Authority.
 More detailed information is available on the VASS system provided by VCAA.

Year	Year Level	Participation			Completion		
		No. students ¹	No. students undertaking VCAL	% students ¹ undertaking VCAL	No. VCAL unit credits undertaken	% satisfactory completion of VCAL credits	% satisfactory completion of VCAL credits
2005	11-12	1650.7	151	9.1	745	71.1	72.9
2006	11-12	1647.8	156	9.5	677	79.0	77.7
2007	11-12	1615.1	127	7.9	545	91.9	76.5
2008	11-12	1642	207	12.6	999	94.4	75.8
2009	11-12	1644.5	222	13.5	1026	97.2	76.2

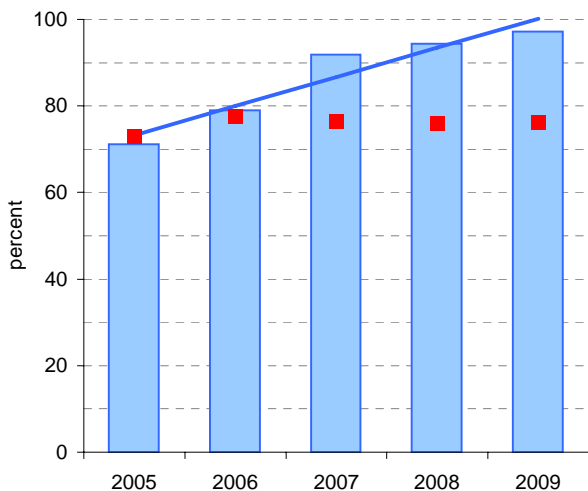
Participation - % Yr11-12 students¹ undertaking VCAL
School against State



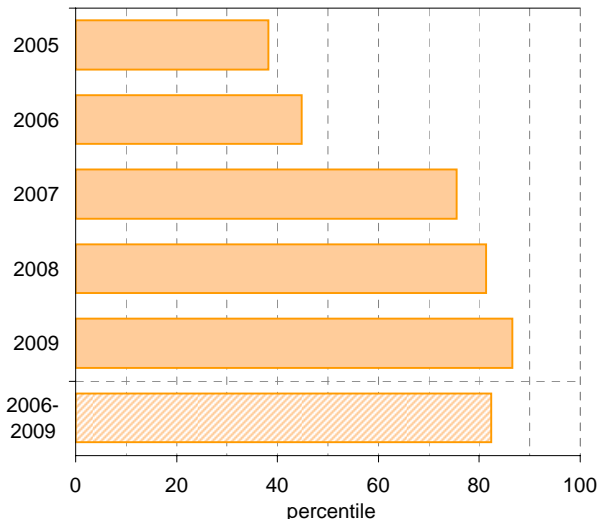
School as percentile



Completion - % satisfactory completion of VCAL credits
School against State



School as percentile



■ School
 ■ State Mean
 — School Trendline*
 School as percentile

Teacher Assessment of Student Progress (PSD students)

School no: 7595

School name: Bendigo Senior Secondary College

Explanation: Teachers assess their students' progress against the 8 VELs Domains / CSF KLAs using a 6-point scale (students in special schools and those who cannot be assessed against the VELs / CSF).

Source of data: Data transmitted from school to DEECD via an online web-form.

	No progress (%)	Little progress (%)	Satisfactory progress (%)	Good progress (%)	Very good progress (%)	Excellent progress (%)	Total students assessed ¹ (no.)
--	--------------------	---------------------------	---------------------------------	-------------------------	------------------------------	------------------------------	--

2005 (by CSF KLA)

English
Mathematics
Science
Technology
The Arts
H&PE
SOSE

2006 (by CSF KLA)

English
Mathematics
Science
Technology
The Arts
H&PE
SOSE

2007 (by VELs Domain)

English
Mathematics
Science
ICT
The Arts
H&PE
Civics & Citizenship

2008 (by VELs Domain)

English
Mathematics
Science
ICT
The Arts
H&PE
Civics & Citizenship

2009 (by VELs Domain)

English
Mathematics
Science
ICT
The Arts
H&PE
Civics & Citizenship

2008 Secondary state benchmarks (by VELs Domain)*

English	5	21	35	23	11	4
Mathematics	10	21	31	19	13	6
Science	9	22	33	18	12	6
ICT	7	18	37	21	11	6
The Arts	8	17	34	26	9	7
H&PE	9	16	35	25	9	6
Civics & Citizenship	7	17	38	26	10	3

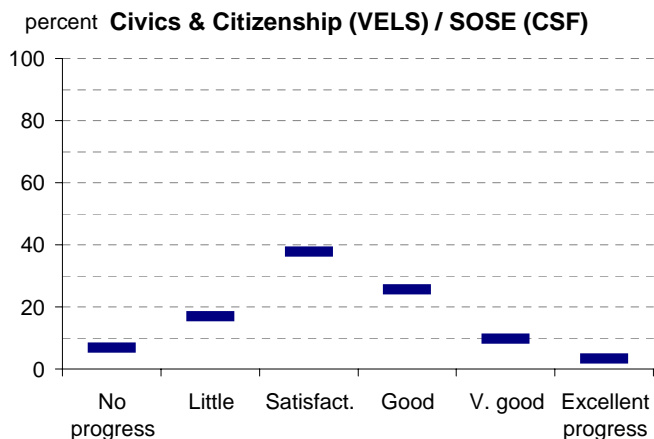
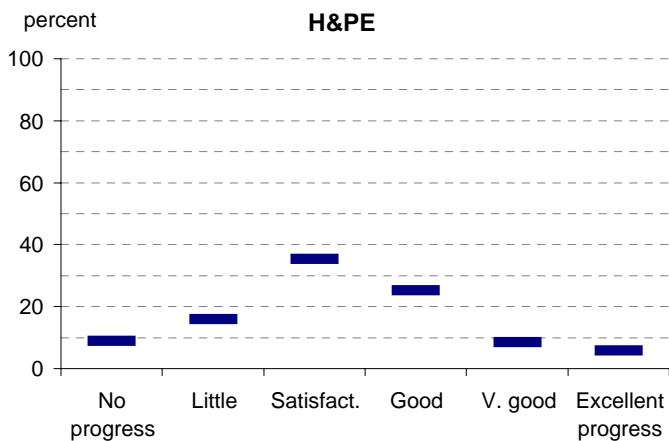
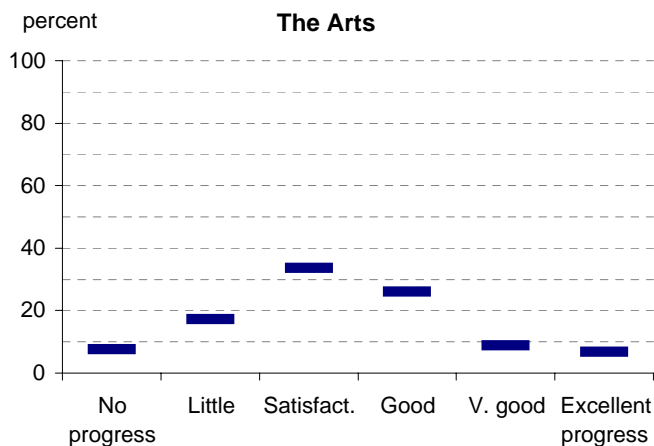
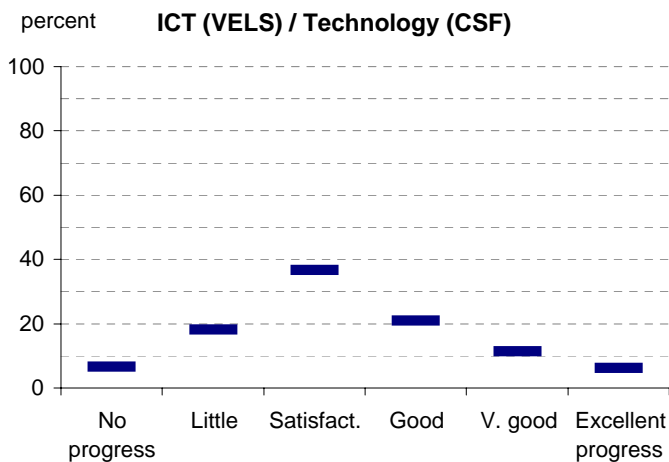
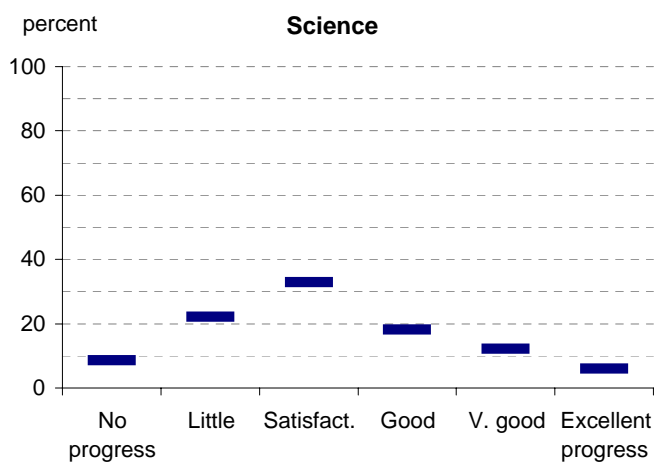
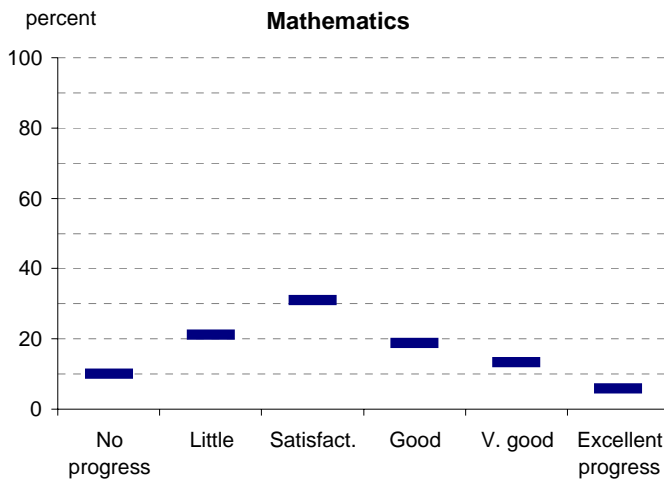
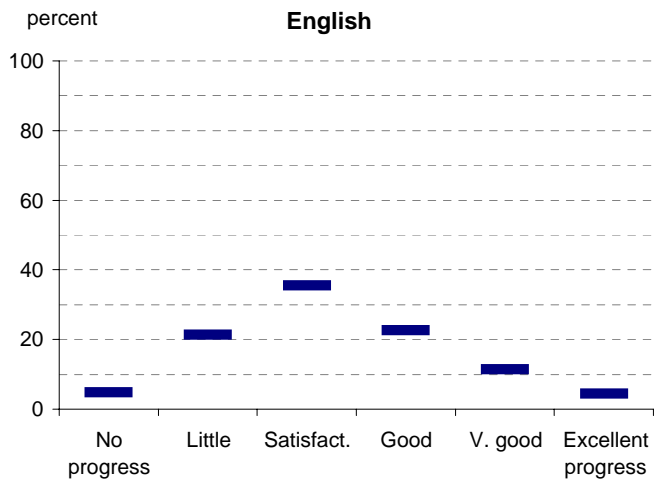
Notes: ¹ If schools provided percentages only, it is not possible to report the number of students assessed. In these cases, the total percentage (100) will be shown.

* 2009 benchmarks will be calculated in August, when data from all schools has been submitted.

Teacher Assessment of Student Progress (PSD students)

School no: 7595

School name: Bendigo Senior Secondary College



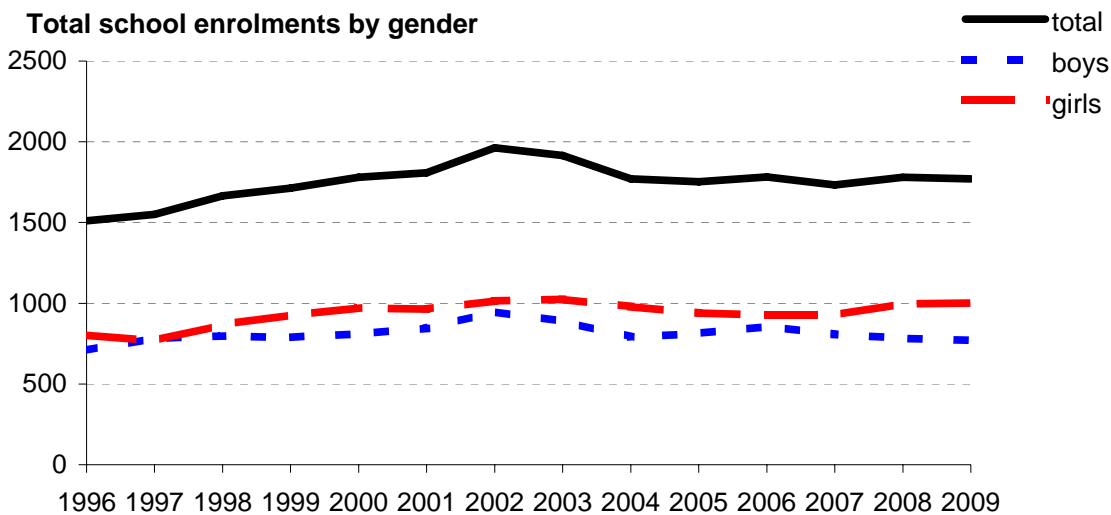
- 2005 (by CSF KLA)
- 2006 (by CSF KLA)
- 2007 (by VELS Domain)
- 2008 (by VELS Domain)
- 2009 (by VELS Domain)
- 2008 Secondary state benchmarks (by VELS Domain)*

Notes: * 2009 benchmarks will be calculated in August, when data from all schools has been submitted.

Enrolments

School no: 7595
School name: Bendigo Senior Secondary College
Explanation: Enrolments at February census.
Source of data: February census.

Year	Total school enrolment			Prep enrolment			Year 7 enrolments		
	boys	girls	total	boys	girls	total	boys	girls	total
1996	708	802	1510						
1997	783	767	1550						
1998	797	868	1665						
1999	789	925	1714						
2000	810	971	1781						
2001	845	963	1808						
2002	948	1015	1963						
2003	889	1025	1914						
2004	791	979	1770						
2005	813	939	1752						
2006	857	925	1782						
2007	806	927	1733						
2008	783	998	1781						
2009	769	1001	1770						



Apparent Student Retention

Note: * The school trendline is only plotted when there is data for each calendar year.

School no: 7595

School name: Bendigo Senior Secondary College

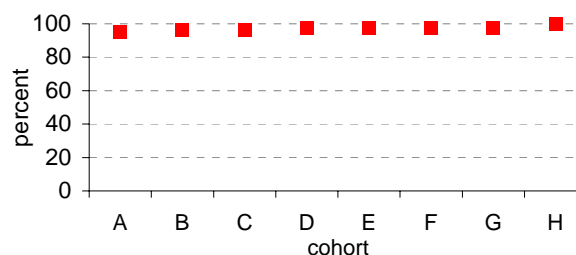
Explanation: Apparent retention rates are based on enrolments. For example, Year 7Feb-12Aug apparent retention refers to year 12 enrolment of students in full-time school education in August expressed as a percentage of year 7 enrolments in February five years earlier.

Source of data: February and August census.

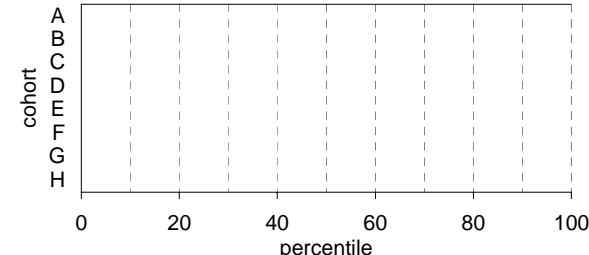
Year 7 (Feb) - 10 (Aug)

	Cohorts:	A	B	C	D	E	F	G	H
Year 7		1999	2000	2001	2002	2003	2004	2005	2006
Year 10		2002	2003	2004	2005	2006	2007	2008	2009
Year 7 (Feb)	no.								
Year 10 (Aug)	no.								
Year 7 (Feb) - 10 (Aug)	%								
State mean	%	95.0	96.6	96.3	97.6	97.3	97.4	97.6	99.9

School against State

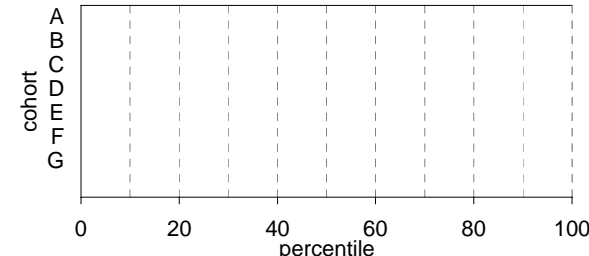
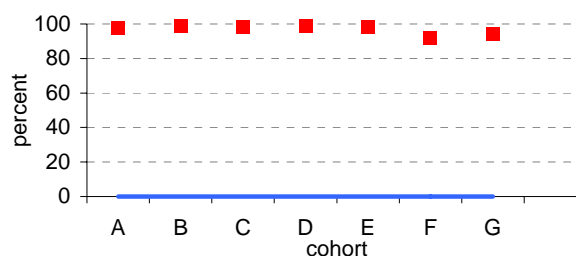


School as percentile



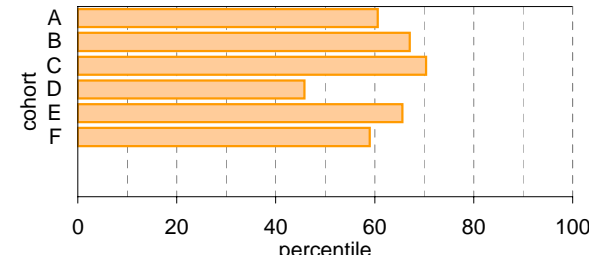
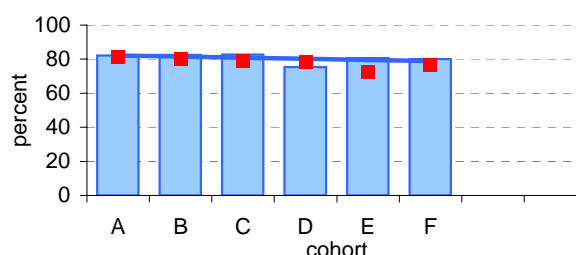
Year 10 (Aug) - 11 (Feb)

	Cohorts:	A	B	C	D	E	F	G
Year 10		2002	2003	2004	2005	2006	2007	2008
Year 11		2003	2004	2005	2006	2007	2008	2009
Year 10 (Aug)	no.	0	0	0	0	0	0	0
Year 11 (Feb)	no.	965.2	910.4	937.8	944.6	946.4	942	934.7
Year 10 (Aug) - 11 (Feb)	%	0.0	0.0	0.0	0.0	0.0	0.0	0.0
State mean	%	97.7	98.7	98.2	99.0	98.2	92.0	94.4



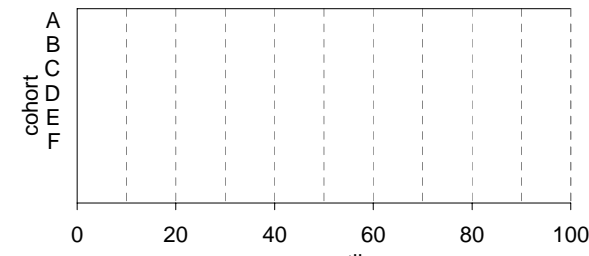
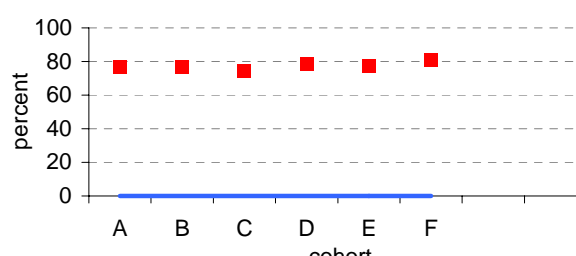
Year 11 (Feb) - 12 (Aug)

	Cohorts:	A	B	C	D	E	F
Year 11		2003	2004	2005	2006	2007	2008
Year 12		2004	2005	2006	2007	2008	2009
Year 11 (Feb)	no.	965.2	910.4	937.8	944.6	946.4	942
Year 12 (Aug)	no.	792.2	750.9	776	712.6	764	753.6
Year 11 (Feb) - 12 (Aug)	%	82.1	82.5	82.7	75.4	80.7	80.0
State mean	%	81.0	79.8	78.8	78.1	72.7	76.7



Year 7 (Feb) - 12 (Aug)

	Cohorts:	A	B	C	D	E	F
Year 7		1999	2000	2001	2002	2003	2004
Year 12		2004	2005	2006	2007	2008	2009
Year 7 (Feb)	no.	0	0	0	0	0	0
Year 12 (Aug)	no.	792.2	750.9	776	712.6	764	753.6
Year 7 (Feb) - 12 (Aug)	%	0.0	0.0	0.0	0.0	0.0	0.0
State mean	%	76.9	76.8	74.6	78.2	77.5	81.1



Legend: School (blue bar), State Mean (red square), School Trendline* (blue line), School as percentile (orange bar)

Real Student Retention

Notes: * The school trendline is only plotted when there is data for each calendar year.
 ^ 2009 benchmarks will be calculated in August, when data from all schools has been submitted.

School no: 7595

School name: Bendigo Senior Secondary College

Explanation: Real retention rates show the percentage of students who have been enrolled at the same school over a period of time.

For example, the formula for the real retention rate for Year 7Feb to 10Aug for school X in 2009 is as follows:

$$\frac{\text{(no. of students enrolled in Yr10 in school X as at August 2009 census and who enrolled prior to 1/3/2006, ie, enrolled in school X at beginning of Yr7)}}{\text{(enrolments in Yr7 Feb in 2006 according to census)}}$$

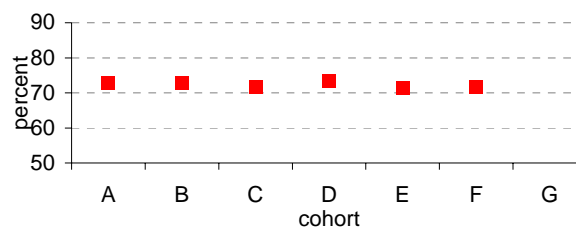
By definition, real school retention will be less than or equal to 100% (assuming there are no students repeating the year, or accelerating through years). Generally, real school retention rates are affected by students transferring to another school & students exiting the school system. They are a measure of the 'holding power' of the school.

Source of data: Data retrieved electronically from CASES21 at time of rollover.

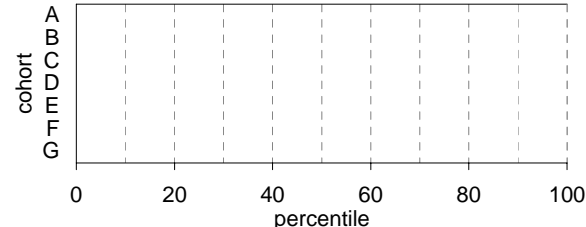
Year 7 (Feb) - 10 (Aug)

	Cohorts:	A	B	C	D	E	F	G
Year 7		2000	2001	2002	2003	2004	2005	2006
Year 10		2003	2004	2005	2006	2007	2008	2009
Year 7 (Feb)	no.							
Year 10 (Aug)	no.							
Year 7 (Feb) - 10 (Aug)	%							
State mean^	%	72.7	72.8	71.7	73.5	71.5	71.8	

School against State^

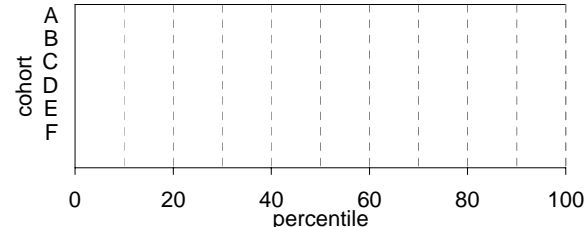
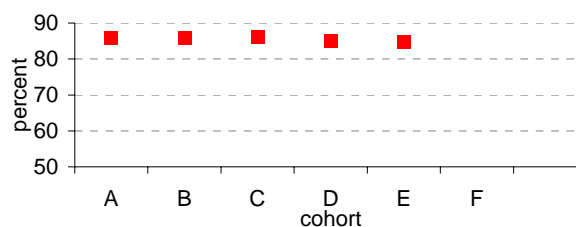


School as percentile against SFO percentile range^



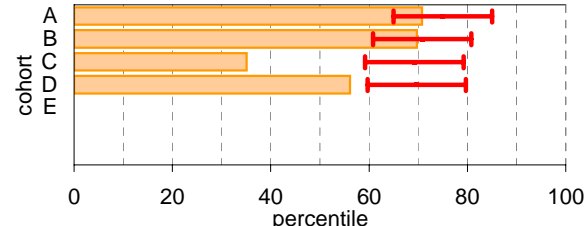
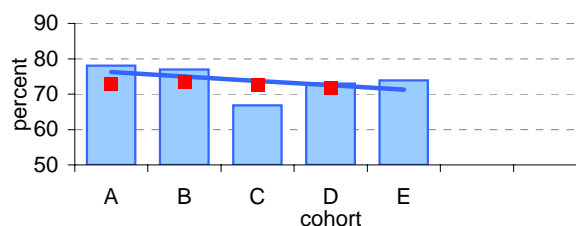
Year 10 (Aug) - 11 (Feb)

	Cohorts:	A	B	C	D	E	F
Year 10		2003	2004	2005	2006	2007	2008
Year 11		2004	2005	2006	2007	2008	2009
Year 10 (Aug)	no.						
Year 11 (Feb)	no.						
Year 10 (Aug) - 11 (Feb)	%						
State mean^	%	85.9	85.9	86.1	85.1	84.7	



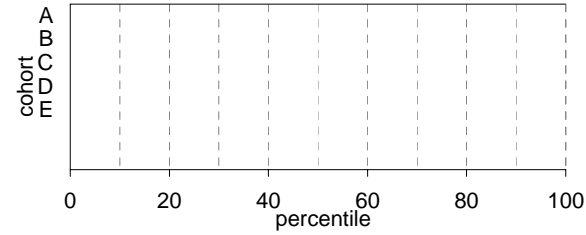
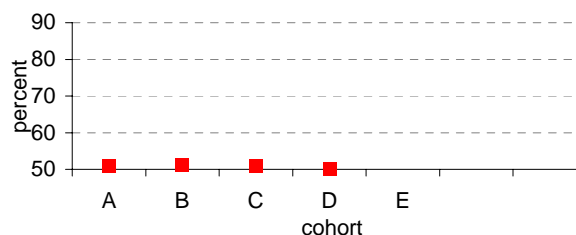
Year 11 (Feb) - 12 (Aug)

	Cohorts:	A	B	C	D	E
Year 11		2004	2005	2006	2007	2008
Year 12		2005	2006	2007	2008	2009
Year 11 (Feb)	no.	910.4	937.8	944.6	946.4	942
Year 12 (Aug)	no.	710.5	721.7	631.1	690.9	695.7
Year 11 (Feb) - 12 (Aug)	%	78.0	77.0	66.8	73.0	73.9
State mean^	%	73.0	73.5	72.5	71.6	



Year 7 (Feb) - 12 (Aug)

	Cohorts:	A	B	C	D	E
Year 7		2000	2001	2002	2003	2004
Year 12		2005	2006	2007	2008	2009
Year 7 (Feb)	no.					
Year 12 (Aug)	no.					
Year 7 (Feb) - 12 (Aug)	%					
State mean^	%	51.0	51.1	50.8	50.1	



Legend: School (blue bar), State Mean (red square), School Trendline* (blue line)

Legend: School as percentile (orange bar), SFO Percentile range (red error bar)

Exit Destination: Year 10

School no: 7595

School name: Bendigo Senior Secondary College

Explanation: The destination of students who left during or at the end of Year 10.

Source of data: Data retrieved electronically from CASES21 following February census.

Exit Destination	2005		2006		2007		2008		2009		2008 state^
	n	%	n	%	n	%	n	%	n	%	%
Continuing education and training											
Government School											43.6
Non-Government School											6.2
University											0.1
Other Training Provider											4.2
(new in 2007)											
TAFE / RTO / ACE											12.4
Apprenticeship / Traineeship											7.3
Home Schooling											0.2
Deferred											0.1
(ceased in 2007)											
School (non Victorian)											
TAFE											
Private Registered Training Organisation											
Adult and Community Education Organisation											
SUBTOTAL											74.0
Not continuing education and training											
Employed (part time)											1.7
Employed (full time)											5.0
Unemployed (seeking work)											4.8
Unemployed (not seeking work)†											1.0
SUBTOTAL											12.6
Unknown											13.4
TOTAL											100.0

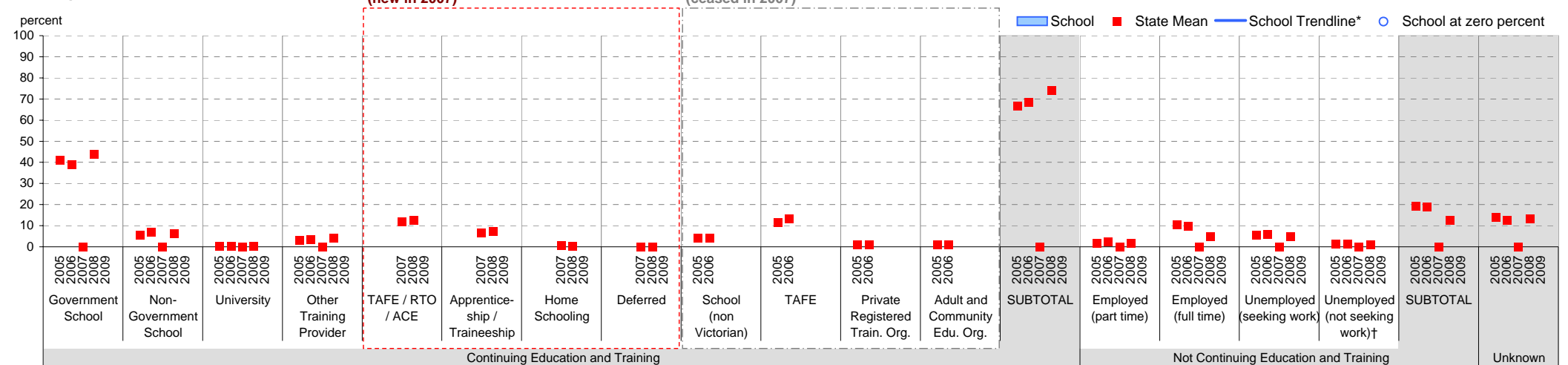
Total Yr 10 February enrolment

Notes: * The school trendline is only plotted when there is data for each calendar year.

† Includes deceased students.

^ 2009 benchmarks will be calculated in August, when data from all schools has been submitted.

School against State



Exit Destination: Year 11

School no: 7595

School name: Bendigo Senior Secondary College

Explanation: The destination of students who left during or at the end of Year 11.

Source of data: Data retrieved electronically from CASES21 following February census.

Exit Destination	2005		2006		2007		2008		2009		2008 state [^]
	n	%	n	%	n	%	n	%	n	%	%
Continuing education and training											
Government School			8	4.5	11	5.0	15	7.9			19.1
Non-Government School			5	2.8	8	3.6	16	8.5			5.1
University					3	1.4	1	0.5			0.4
Other Training Provider			1	0.6	33	14.9	7	3.7			4.8
(new in 2007) TAFE / RTO / ACE					10	4.5	34	18.0			15.6
Apprenticeship / Traineeship					16	7.2	10	5.3			13.9
Home Schooling					1	0.5					0.1
Deferred											0.2
(ceased in 2007) School (non Victorian)			5	2.8							
TAFE			7	3.9							
Private Registered Training Organisation											
Adult and Community Education Organisation			2	1.1							
SUBTOTAL			28	15.6	82	37.1	83	43.9			59.1
Not continuing education and training											
Employed (part time)			9	5.0	22	10.0	9	4.8			4.4
Employed (full time)			25	14.0	22	10.0	8	4.2			12.1
Unemployed (seeking work)			72	40.2	63	28.5	43	22.8			8.5
Unemployed (not seeking work) [†]			5	2.8	7	3.2	5	2.6			1.7
SUBTOTAL			111	62.0	114	51.6	65	34.4			26.7
Unknown			40	22.3	25	11.3	41	21.7			14.3
TOTAL			179	100.0	221	100.0	189	100.0			100.0

Total Yr 11 February enrolment

938

945

946

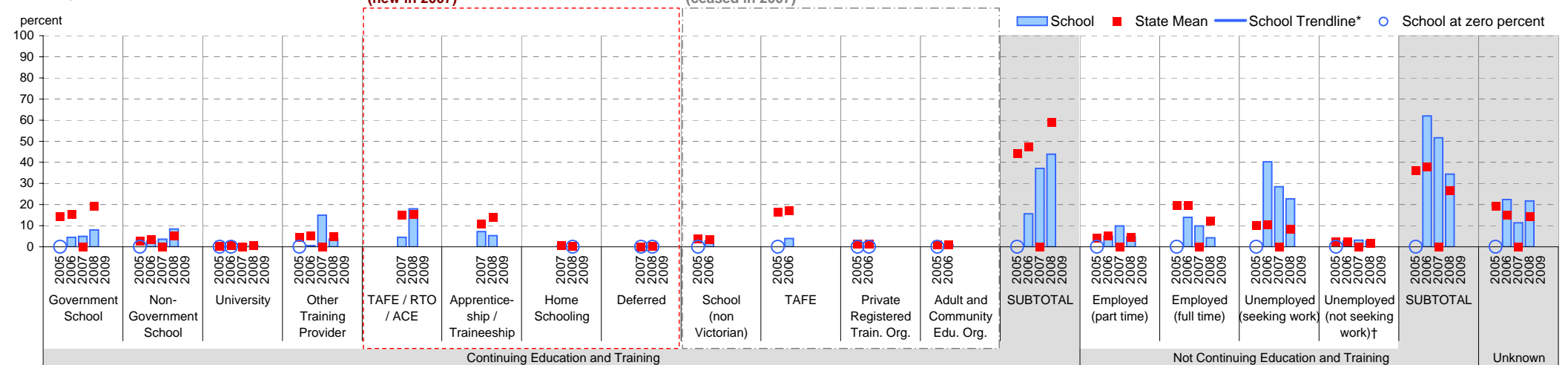
942

Notes: * The school trendline is only plotted when there is data for each calendar year.

† Includes deceased students.

^ 2009 benchmarks will be calculated in August, when data from all schools has been submitted.

School against State



Exit Destination: Students who left Year 12 before completing the year

School no: 7595

School name: Bendigo Senior Secondary College

Explanation: The destination of students who left prior to completing Year 12.

Source of data: Data retrieved electronically from CASES21 following February census.

Exit Destination	2005		2006		2007		2008		2009		2008 state [^]
	n	%	n	%	n	%	n	%	n	%	%
Continuing education and training											
Government School			1	0.9	6	4.7	5	3.8			11.6
Non-Government School			1	0.9	1	0.8	3	2.3			2.6
University			1	0.9	5	3.9	1	0.8			1.2
Other Training Provider			2	1.9			2	1.5			3.6
(new in 2007)											
TAFE / RTO / ACE					8	6.3	14	10.8			12.9
Apprenticeship / Traineeship					8	6.3	16	12.3			15.2
Home Schooling											
Deferred											0.2
(ceased in 2007)											
School (non Victorian)			2	1.9							
TAFE			2	1.9							
Private Registered Training Organisation											
Adult and Community Education Organisation											
SUBTOTAL			9	8.4	28	21.9	41	31.5			47.4
Not continuing education and training											
Employed (part time)			11	10.3	15	11.7	28	21.5			6.6
Employed (full time)			18	16.8	27	21.1	19	14.6			18.4
Unemployed (seeking work)			31	29.0	47	36.7	36	27.7			10.5
Unemployed (not seeking work) [†]			4	3.7	4	3.1	5	3.8			2.5
SUBTOTAL			64	59.8	93	72.7	88	67.7			37.9
Unknown			34	31.8	7	5.5	1	0.8			14.7
TOTAL			107	100.0	128	100.0	130	100.0			100.0

Total Yr 12 February enrolment

815

837

787

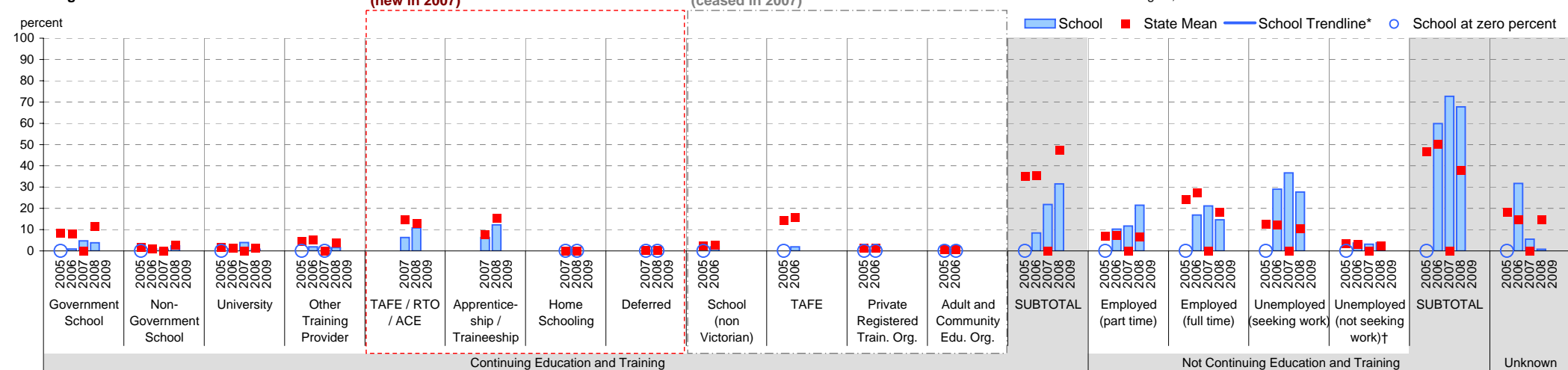
839

Notes: * The school trendline is only plotted when there is data for each calendar year.

† Includes deceased students.

^ 2009 benchmarks will be calculated in August, when data from all schools has been submitted.

School against State



Exit Destination: Students who left at the end of Year 12

School no: 7595

School name: Bendigo Senior Secondary College

Explanation: The destination of students who left at the end of Year 12.

Source of data: Data retrieved electronically from CASES21 following February census.

Exit Destination	2005		2006		2007		2008		2009		2008 state^
	n	%	n	%	n	%	n	%	n	%	%
Continuing education and training											
Government School			2	0.3			1	0.1			1.0
Non-Government School											0.4
University			312	39.8	167	26.1	314	45.0			37.5
Other Training Provider			7	0.9	9	1.4	5	0.7			2.9
(new in 2007) TAFE / RTO / ACE					57	8.9	68	9.7			22.8
Apprenticeship / Traineeship					35	5.5	38	5.4			5.1
Home Schooling											
Deferred					126	19.7					4.5
(ceased in 2007) School (non Victorian)											
TAFE			49	6.3							
Private Registered Training Organisation											
Adult and Community Education Organisation											
SUBTOTAL			370	47.2	394	61.5	426	61.0			74.3
Not continuing education and training											
Employed (part time)			2	0.3	64	10.0	63	9.0			5.6
Employed (full time)			10	1.3	60	9.4	53	7.6			8.4
Unemployed (seeking work)			1	0.1	39	6.1	31	4.4			4.2
Unemployed (not seeking work)†					7	1.1	2	0.3			0.7
SUBTOTAL			13	1.7	170	26.5	149	21.3			19.0
Unknown			401	51.1	77	12.0	123	17.6			6.7
TOTAL			784	100.0	641	100.0	698	100.0			100.0

Total Yr 12 February enrolment

815

837

787

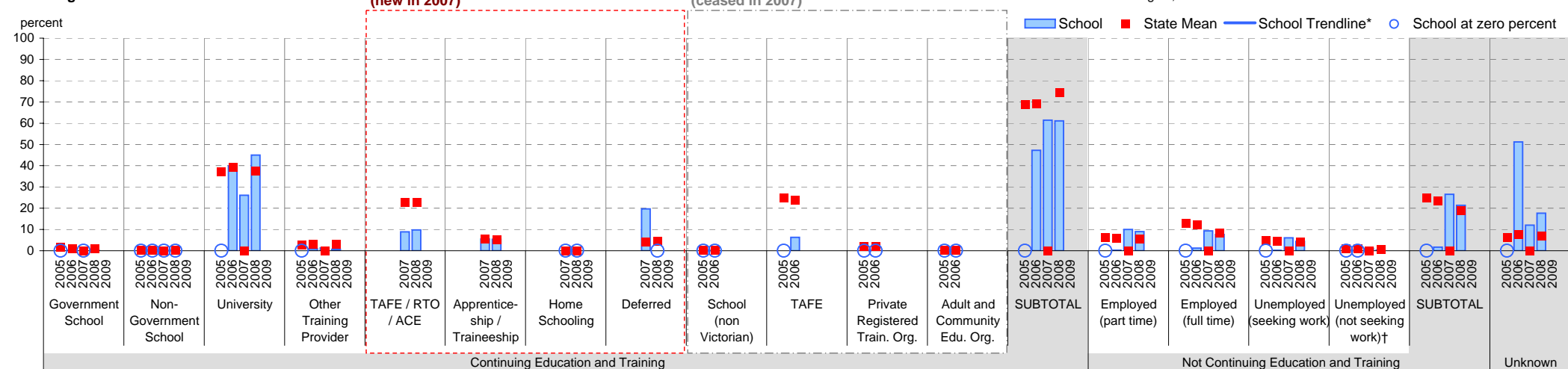
839

Notes: * The school trendline is only plotted when there is data for each calendar year.

† Includes deceased students.

^ 2009 benchmarks will be calculated in August, when data from all schools has been submitted.

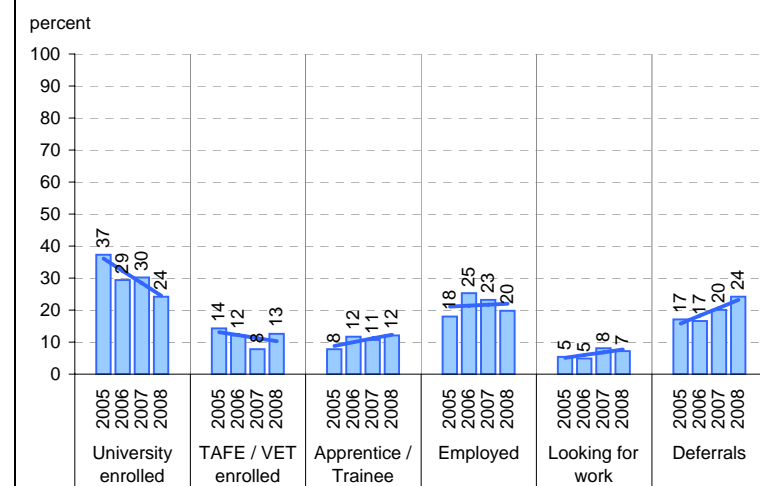
School against State



On Track

Source of data: Data received from a telephone survey of Year 12 completers, conducted in April / May of the subsequent year.

School only



Note: The exit destination data from On Track and CASES21 is not directly comparable for several reasons, one of which is the different bases. CASES21 data is based on all Year 12 completers, whereas On Track is based on Year 12 completers who responded to the survey. Hence the CASES21 data has an "unknown" category and the On Track data does not. Another reason is the slightly different categories for example, CASES21 includes a "home schooling" category.

Student Absence

School no: 7595

School name: Bendigo Senior Secondary College

Source of data: Data retrieved electronically from CASES21.

Explanation: The average (mean) number of absent days† per FTE** student.

Note that 20 absent days equates to 1 absent day per fortnight, and 10 absent days to 1 absent day per month.

	School								2008 state benchmark^		
	2006		2007		2008		2009		25th ptile	Mean	75th ptile
	Enrolments	Avg absent days / FTE** student	Enrolments	Avg absent days / FTE** student	Enrolments	Avg absent days / FTE** student	Enrolments	Avg absent days / FTE** student			
Yr 7									12.8	15.2	18.6
Yr 8									15.4	18.8	23.7
Yr 9									17.0	21.2	26.6
Yr 10									15.7	19.6	23.3
Yr 11	898.3	18.3	901.3	14.5	883.1	11.4	889.2	14	11.5	14.9	19.5
Yr 12	802.7	14.6	734.8	13.9	782.8	11.1	777.6	12.5	8.5	11.7	15.2
Ungraded										15.2	
7-12 mean		16.5		14.2		11.3		13.3		17.2	

Notes:

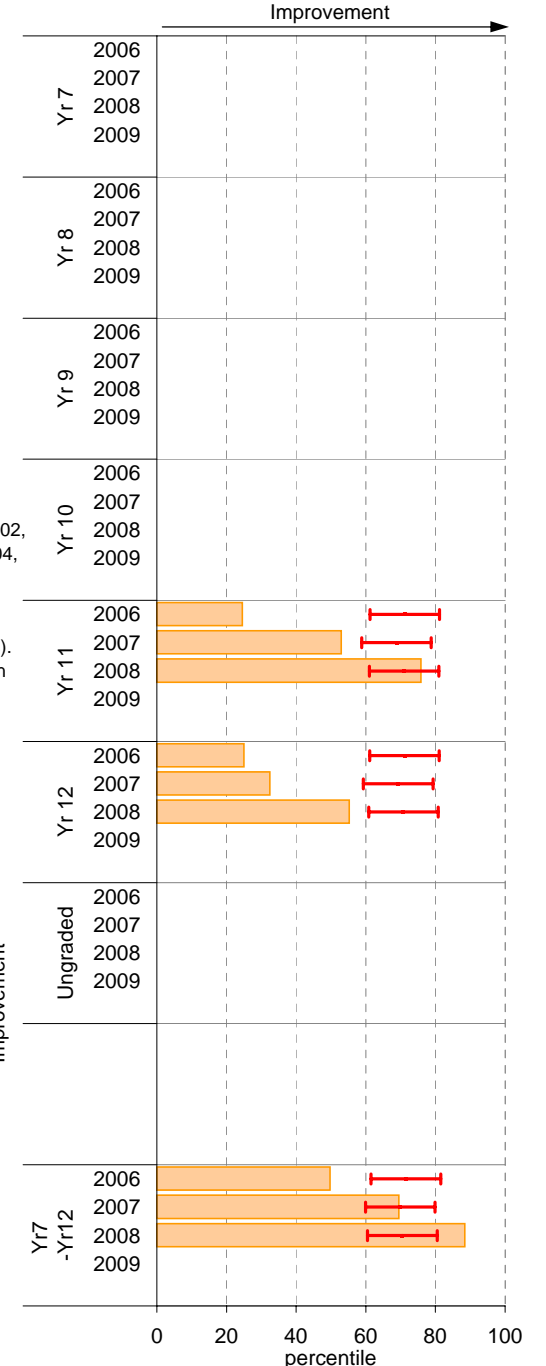
† Includes non-curriculum absences only (absence codes 200, 201, 202, 203, 205, 206, 207, 208, 209, 210, 211, 300, 401, 500, 700, 800, 804, 805, 900).

* The school trendline is only plotted when there is data for each calendar year.

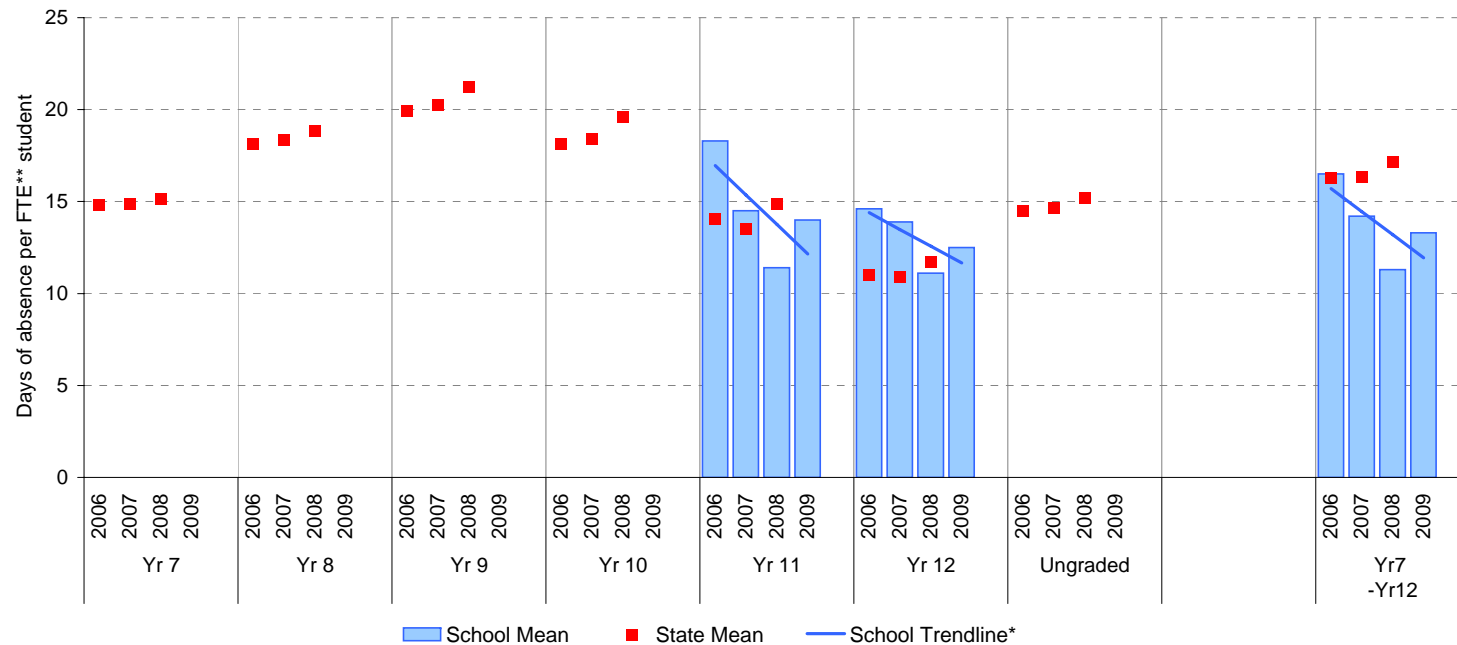
** FTE = Full Time Equivalent (including part-time & part-year fractions).

^ 2009 benchmarks and percentiles will be calculated in August, when data from all schools has been submitted.

School Mean as percentile against SFO percentile range^



School Mean against State Mean^



Parent Opinion

School no: 7595

School name: Bendigo Senior Secondary College

Explanation: A self-completion questionnaire to obtain parents' opinions of the school. Parents rated a number of statements using a scale where 1=strongly disagree & 7=strongly agree. The statements were grouped into the following categories.

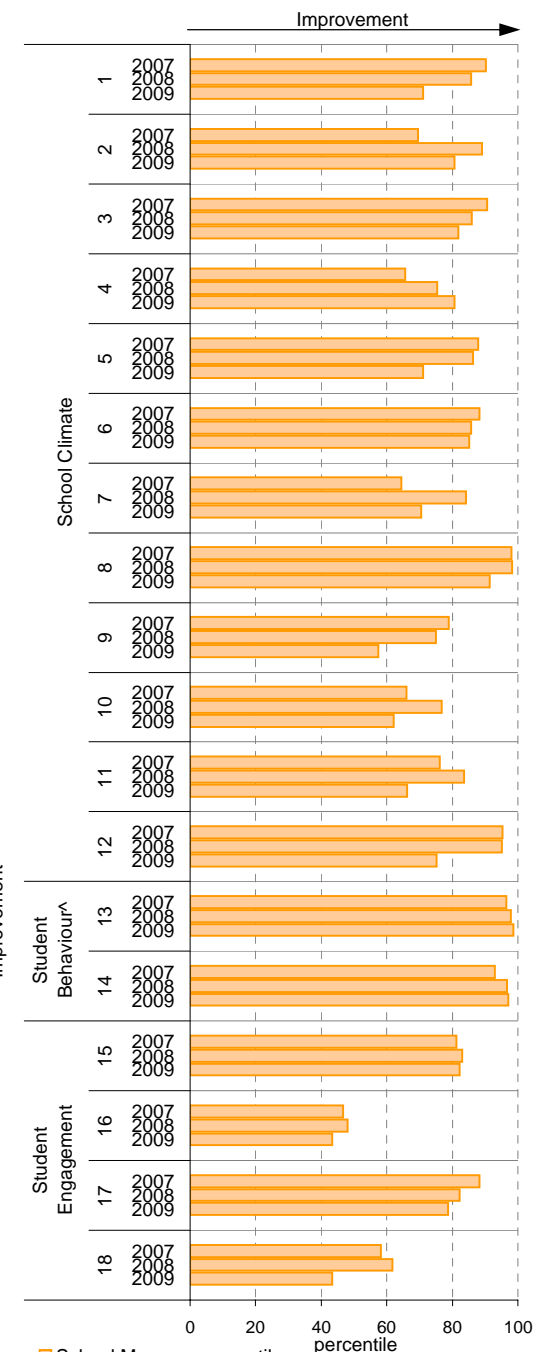
Source of data: Data scanned from questionnaires completed by parents.

Variable No.	Name	Year	School mean	State Secondary median
1	School Improvement	2007	5.52	5.11
		2008	5.44	5.07
		2009	5.28	5.10
2	Approachability	2007	5.33	5.10
		2008	5.52	5.12
		2009	5.40	5.09
3	Teacher Morale	2007	5.34	4.88
		2008	5.32	4.89
		2009	5.23	4.90
4	Parent Input	2007	4.99	4.83
		2008	5.09	4.84
		2009	5.16	4.87
5	Stimulating Learning	2007	5.19	4.79
		2008	5.26	4.82
		2009	5.03	4.84
6	Behaviour Management	2007	5.16	4.76
		2008	5.16	4.71
		2009	5.17	4.74

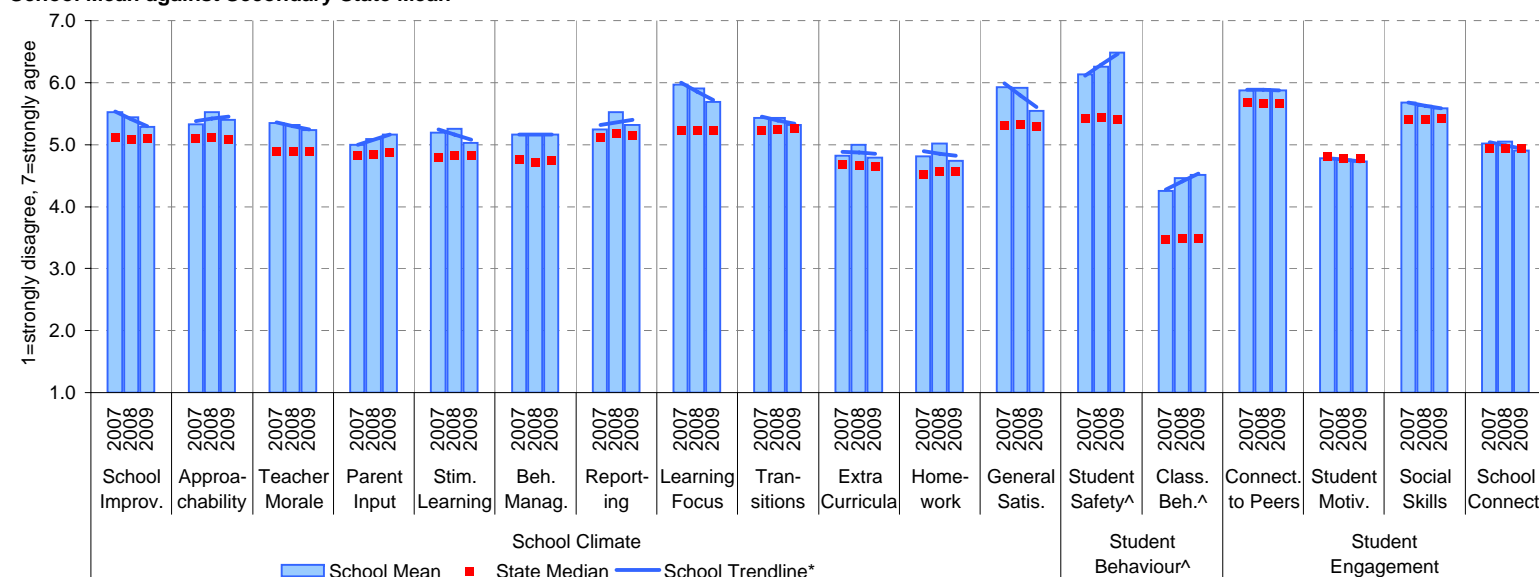
Variable No.	Name	Year	School mean	State Secondary median
7	Reporting	2007	5.24	5.11
		2008	5.52	5.17
		2009	5.32	5.15
8	Learning Focus	2007	5.97	5.24
		2008	5.91	5.22
		2009	5.69	5.22
9	Transitions	2007	5.43	5.23
		2008	5.43	5.24
		2009	5.32	5.25
10	Extra Curricula	2007	4.83	4.67
		2008	4.99	4.65
		2009	4.79	4.65
11	Homework	2007	4.81	4.51
		2008	5.02	4.57
		2009	4.73	4.56
12	General Satisfaction	2007	5.92	5.31
		2008	5.92	5.32
		2009	5.54	5.29

Variable No.	Name	Year	School mean	State Secondary median
13	Student Safety^	2007	6.13	5.42
		2008	6.26	5.44
		2009	6.48	5.40
14	Classroom Behaviour^	2007	4.25	3.47
		2008	4.46	3.48
		2009	4.51	3.49
15	Connectedness to Peers	2007	5.88	5.68
		2008	5.89	5.67
		2009	5.87	5.67
16	Student Motivation	2007	4.78	4.81
		2008	4.76	4.78
		2009	4.73	4.77
17	Social Skills	2007	5.68	5.41
		2008	5.63	5.40
		2009	5.59	5.42
18	School Connectedness	2007	5.01	4.95
		2008	5.05	4.94
		2009	4.91	4.95

School Mean as percentile (by school type)



School Mean against Secondary State Mean



Notes: * The school trendline is plotted when there is data for each calendar year.

^^ Benchmarks available for Primary, Secondary, Pri/Sec, Special and SDS schools.

** If there were 6 or less respondents, table data is not shown for confidentiality reasons. If there were 3 or less respondents, graph data is not shown for confidentiality reasons.

^ Parents' responses to all negatively phrased questions have been reversed for reporting purposes. Across all variables, the higher the score or percentile rank, the more positive parents' perceptions.

Produced by Data, Outcomes and Evaluation Division, DEECD

Staff Opinion

School no: 7595

School name: Bendigo Senior Secondary College

Explanation: A self-completion questionnaire to obtain the staff's opinions of the school. The survey was administered online using the School Organisational Health Questionnaire.

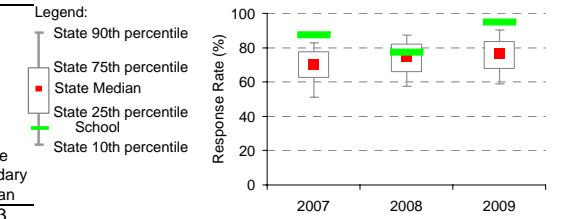
Source of data: Data transmitted from school staff to DEECD via an online survey application.

Variable No.	Name	Year	School mean	State Secondary median
1	Individual Morale	2007	65.8	63.5
		2008	63.8	65.0
		2009	68.1	65.4
2	School Morale	2007	62.6	60.2
		2008	60.1	62.2
		2009	66.8	62.1
3	Supportive Leadership	2007	63.5	63.8
		2008	58.0	65.8
		2009	63.6	65.4
4	Role Clarity	2007	72.6	67.8
		2008	70.9	69.1
		2009	72.3	69.3
5	Professional Interaction	2007	70.5	68.3
		2008	70.4	70.4
		2009	72.5	69.8
6	Participative Decision-Making	2007	61.4	58.7
		2008	60.7	59.8
		2009	61.6	59.2
7	Goal Congruence	2007	72.2	65.3
		2008	69.1	66.4
		2009	73.0	66.7

Variable No.	Name	Year	School mean	State Secondary median
8	Appraisal & Recognition	2007	55.4	55.4
		2008	54.5	57.9
		2009	60.4	58.5
9	Professional Growth	2007	69.9	61.6
		2008	67.2	62.7
		2009	69.2	63.1
10	Curriculum Coordination	2007	61.7	57.5
		2008	60.6	58.4
		2009	64.0	58.0
11	Effective Discipline Policy	2007	61.1	59.2
		2008	60.0	59.5
		2009	65.6	60.2
12	Student Orientation	2007	75.7	70.0
		2008	74.5	70.8
		2009	80.4	71.2
13	Student Motivation	2007	51.6	48.1
		2008	51.0	49.0
		2009	58.2	50.4
14	Student Decision-Making	2007	52.5	56.2
		2008	50.4	57.8
		2009	61.9	59.3

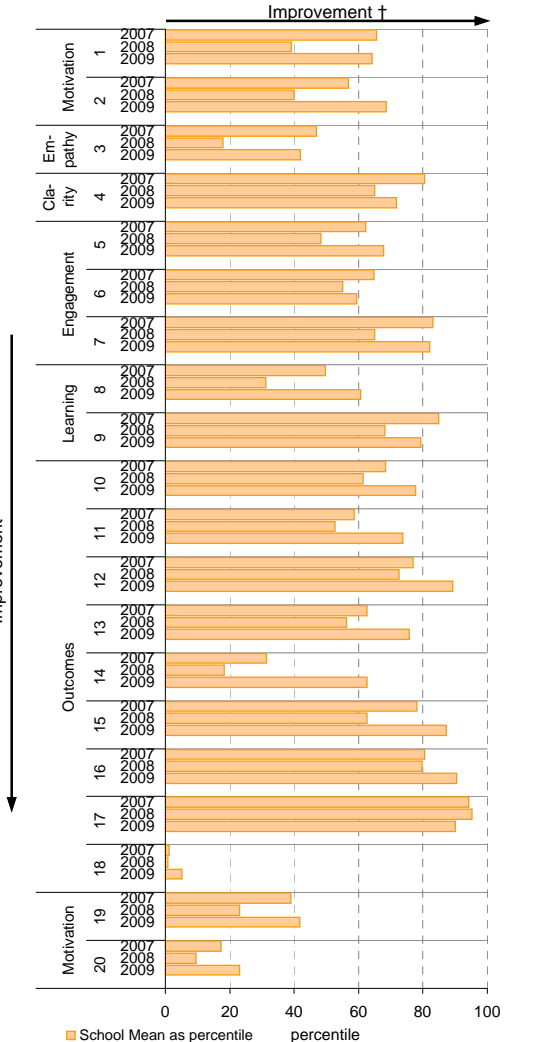
Variable No.	Name	Year	School mean	State Secondary median
15	Learning Environment	2007	69.2	62.3
		2008	67.0	63.8
		2009	74.5	63.8
16	Student Misbehaviour	2007	37.1	49.9
		2008	36.9	49.6
		2009	30.4	50.0
17	Classroom Misbehaviour	2007	12.1	22.4
		2008	11.0	21.4
		2009	12.8	21.6
18	Excessive Work Demands	2007	76.5	61.4
		2008	76.1	59.4
		2009	71.8	58.5
19	Individual Distress	2007	34.8	33.2
		2008	36.4	31.7
		2009	32.1	31.1
20	School Distress	2007	59.1	48.6
		2008	60.3	46.2
		2009	53.0	46.2

School response rate** against Secondary school distribution

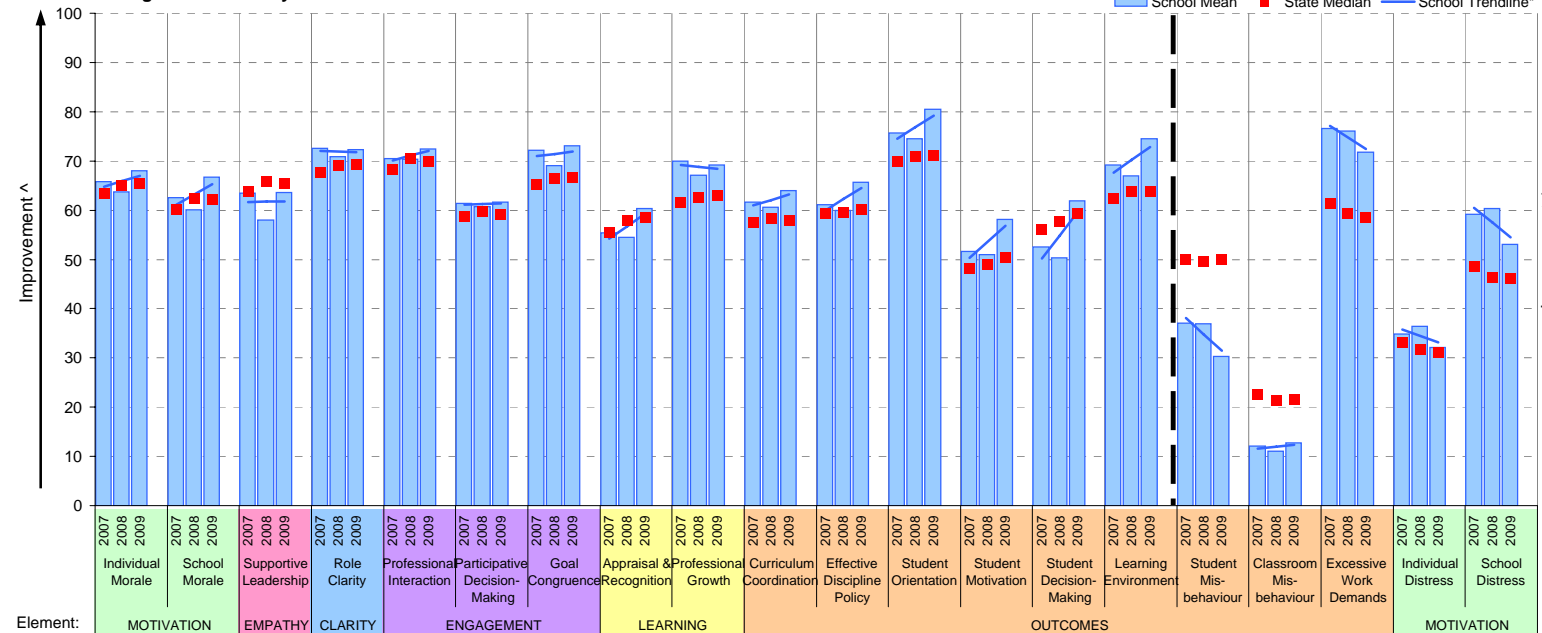


Year	No. of respondents	No. invited	Response Rate
2007	139	159	87%
2008	130	168	77%
2009	164	173	95%

School Mean as percentile (by school type)



School Mean against Secondary State Median



Notes: * The school trendline is only plotted when there is data for each calendar year.

** If there were 6 or less respondents, table data is not shown for confidentiality reasons. If there were 3 or less respondents, graph data is not shown for confidentiality reasons.

^ The higher the school mean, the more positive the outcome for variables 1 to 15. The lower the school mean, the more positive the outcome for variables 16 to 20.

† The higher the school percentile, the more positive the outcome for all variables.

^^ Benchmarks are available for Primary, Secondary, Pri/Sec, Special & SDS schools.

Performance & Development Culture (P&DC)^{††}

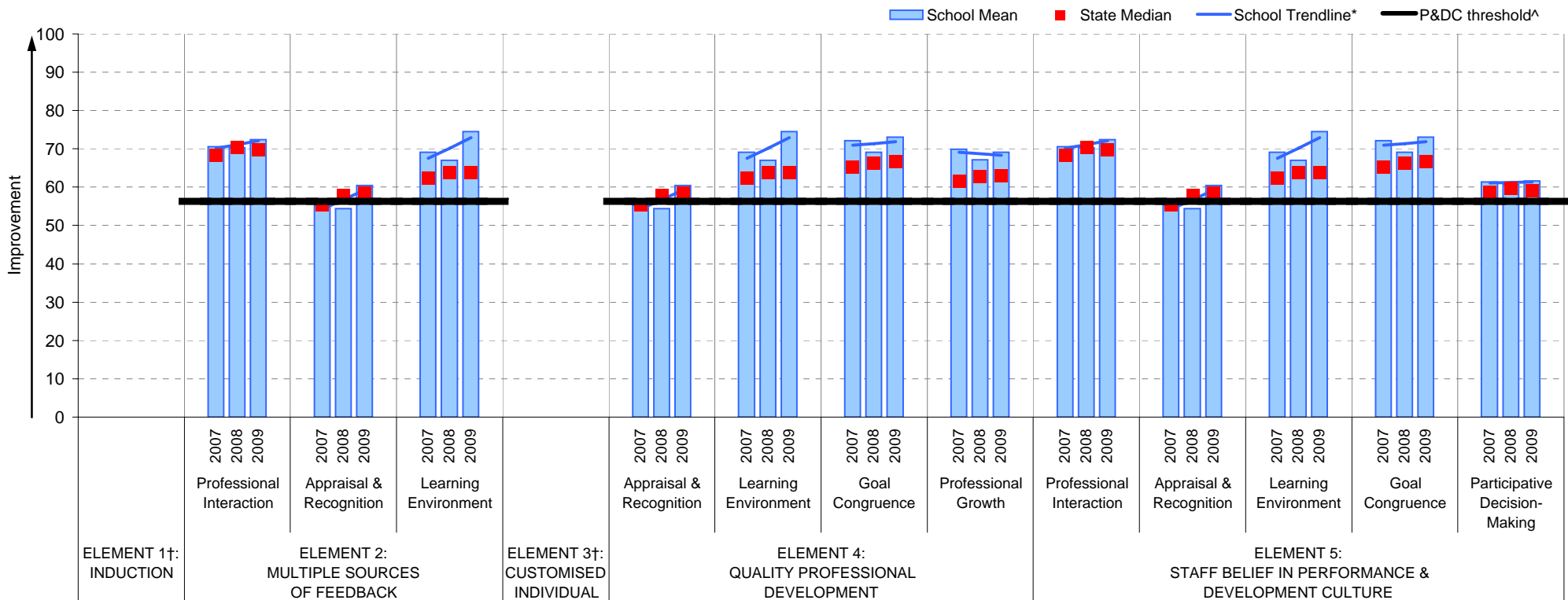
School no: 7595

School name: Bendigo Senior Secondary College

Explanation: The data on this page refers to the Staff Opinion Survey.

Source of data: Data transmitted from school staff to DEECD via an online survey application.

School Mean against Secondary State Median



Notes:

†† An assessment of the correlation between the P&DC Questionnaire and the Staff Opinion Survey was undertaken using data from Victorian Government schools that completed both surveys from 2005 to 2007 (ie. 699 schools). This led to the identification of the components of the Staff Opinion Survey that could be used to assist schools with the ongoing monitoring of their performance and development culture. Refer to the P&DC website for further information: <http://www.education.vic.gov.au/management/schoolimprovement/panddc/default.htm>. For numerical results relating to the above graph, refer to the Staff Opinion Survey page in this report.

† Note that there is no significant correlation between the Staff Opinion Survey and P&DC elements 1 (Induction) and 3 (Customised Individual Development Plans).

^ The P&DC threshold was derived from the P&DC Questionnaire 'percent favourable' methodology where a school is considered at the standard of accreditation when their Element score is >75% favourable (ie. at least 75% of staff selected the top two response categories in the P&DC Questionnaire).

* The school trendline is only plotted when there is data for each calendar year.

** If there were 3 or less respondents, graph data is not shown for confidentiality reasons.

^^ Benchmarks are available for Primary, Secondary, Pri/Sec, Special & SDS schools.

Staff Sick Leave

School no: 7595

School name: Bendigo Senior Secondary College

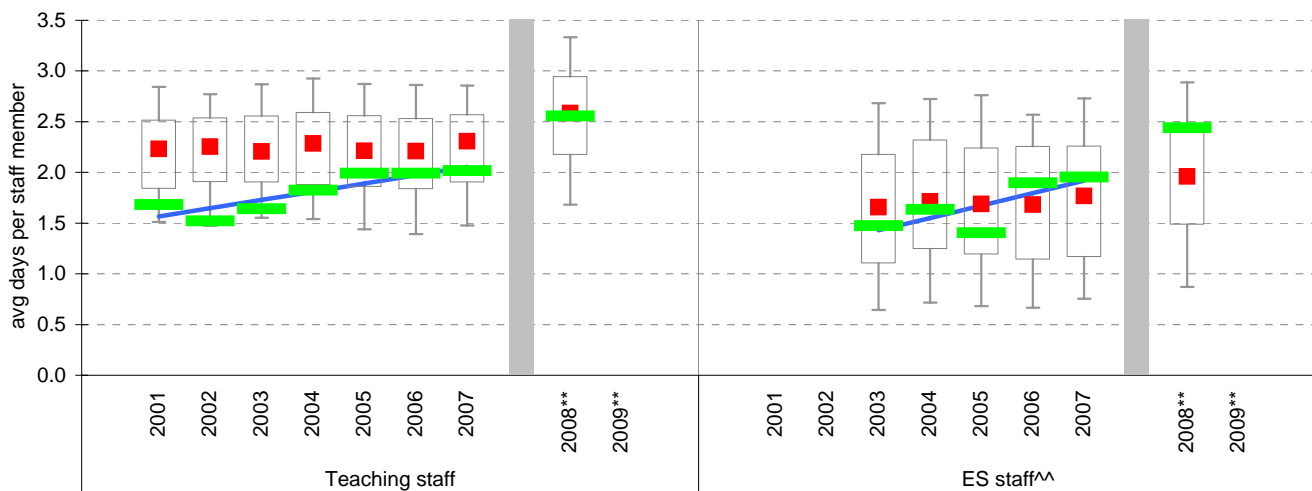
Explanation: The number of non-certificated and total sick leave days taken per staff member. A detailed explanation on how staff sick leave is calculated is provided at: www.education.vic.gov.au/management/schoolimprovement/performance/data/performance-reports/faq.htm.

Source of data: Human Resources Management System (HRMS)^.

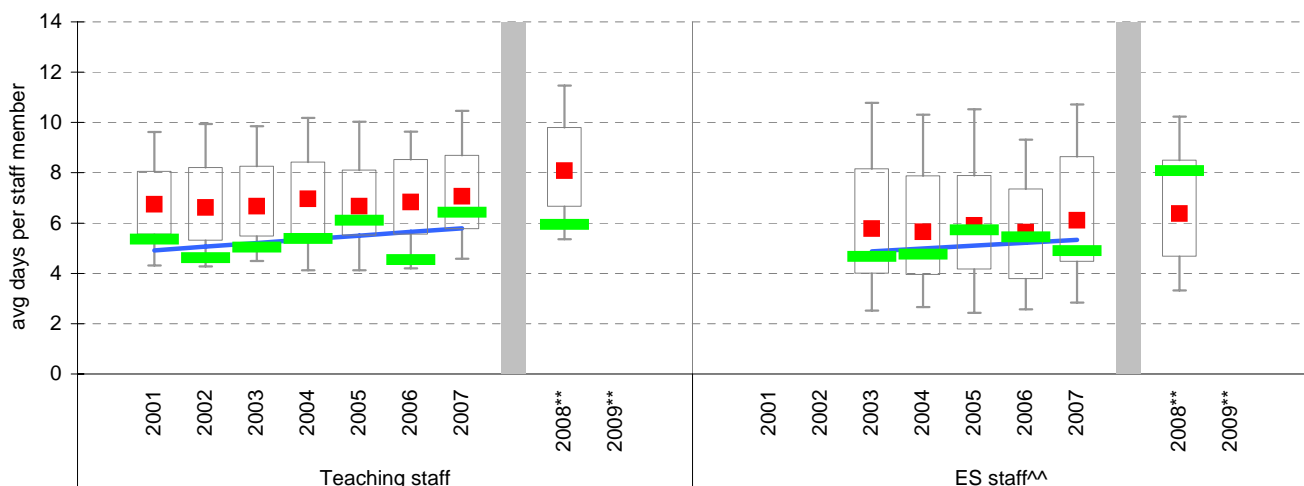
Non-Certificated sick leave days per staff member^										
Staff Type	2001	2002	2003	2004	2005	2006	2007	2008**	2009**	2009 State Median**
Teacher	1.68	1.52	1.64	1.83	1.99	1.99	2.02	2.56		
ES ^{^^}			1.47	1.64	1.41	1.90	1.95	2.44		

Total sick leave days per staff member^										
Staff Type	2001	2002	2003	2004	2005	2006	2007	2008**	2009**	2009 State Median**
Teacher	5.36	4.63	5.05	5.38	6.11	4.55	6.43	5.95		
ES ^{^^}			4.67	4.76	5.73	5.45	4.90	8.08		

NON-CERTIFICATED sick leave

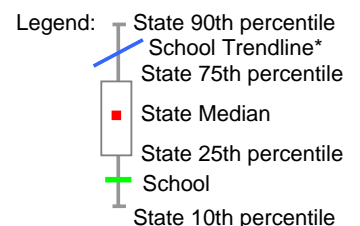


TOTAL sick leave



Notes:

- * The school trendline is only plotted when there is data for each calendar year.
- ** The way in which sick leave data are calculated changed in 2008. As such, data from 2008 cannot be compared with previous years. 2009 data will be available in April, 2010.
- ^ There may be some discrepancy between the results from CASES21 and those from HRMS. The latter are considered to be more accurate.
- ^^ Data for ES (Education Support) staff is only available from 2003.



Bank Balances

School no: 7595

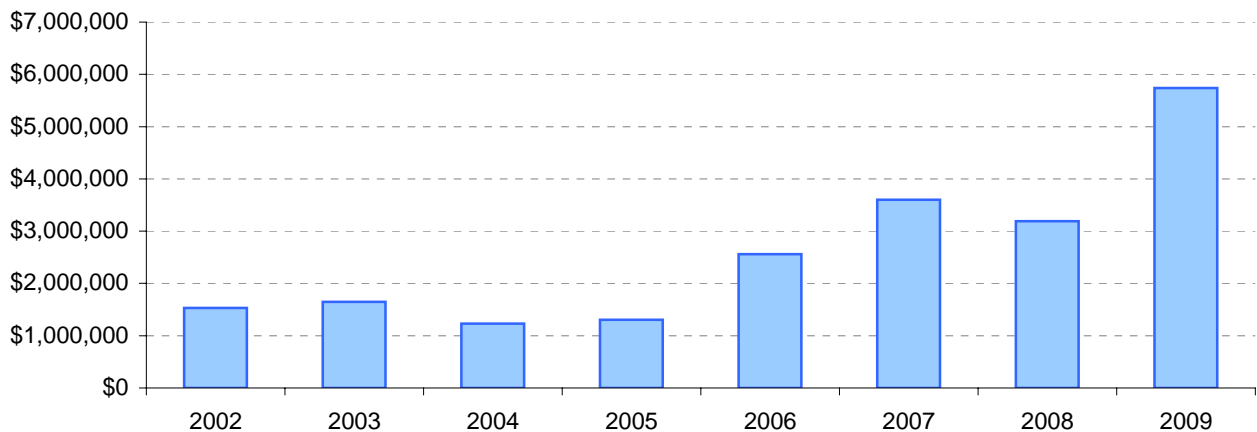
School name: Bendigo Senior Secondary College

Explanation: Account balance figures include official and investment accounts, and are calculated by taking the opening balance at 1st January plus the total receipts at 31st December less total payments at 31st December.

Account Balances (Official plus Investment Accounts)

2002	\$1,532,103	2006	\$2,560,951
2003	\$1,649,026	2007	\$3,603,700
2004	\$1,229,063	2008	\$3,188,168
2005	\$1,305,135	2009	\$5,739,899

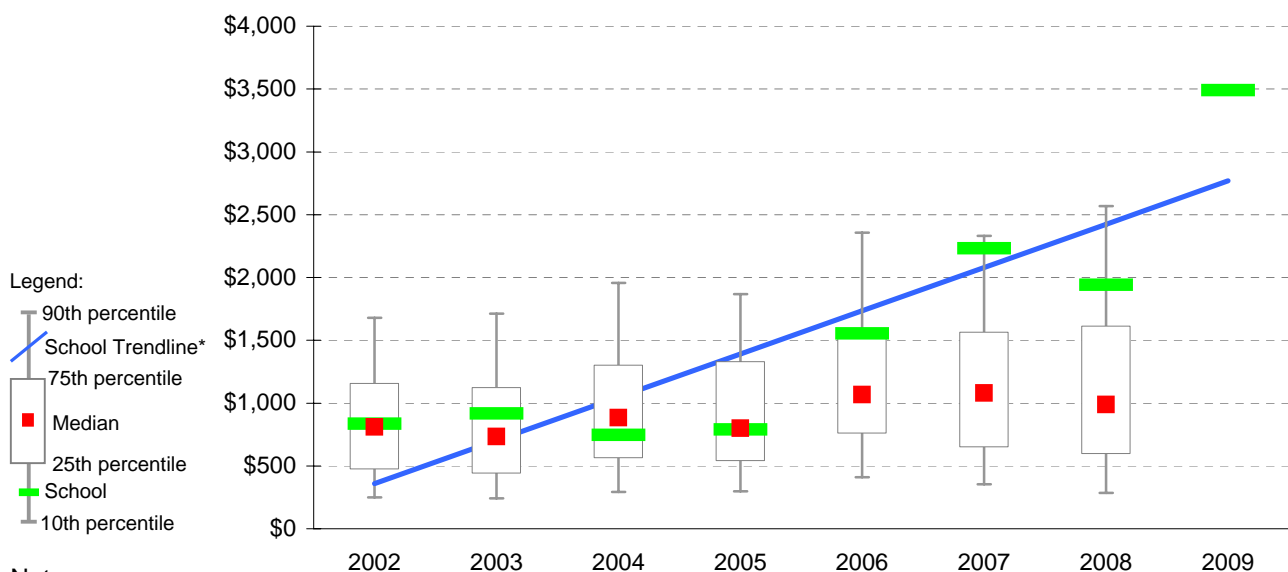
Account Balances



Account Balances (Official plus Investment Accounts) per student[†]

2002	\$836	2006	\$1,554
2003	\$917	2007	\$2,231
2004	\$746	2008	\$1,942
2005	\$791	2009	\$3,490

School account balances per student enrolled in August census plotted on state Secondary benchmarks[^]



Notes:

* The school trendline is only plotted when there is data for each calendar year.

† The account balance per student has been calculated to enable some comparison to be made between schools.

[^] Benchmarks for primary, secondary, pri/sec, SDS, special and language schools.

2009 benchmarks will be calculated in August, when data from all schools has been submitted.